



BUILT FOR BOWLING

PRODUCTS & PARTS
2018-19



Welcome to the FLEX Generation

The modern design of the FLEX makes a bold statement, and the DUO conditioning system under the lid backs it up. DUO Technology gives you the benefit of easily using more than one lane conditioner in your center. By combining the precise accuracy of Sanction Technology™ with dual conditioner cartridges, and still being able to verify how much conditioner will be applied to the lane, DUO Technology gives you versatility, dependability, and accountability.

FLEX gives you features to improve performance, simplify your experience, and allows you to have more control of your lane maintenance program. Want even more? Choose from any of our pgrades for a machine perfectly customized to fit your needs.

FLEX WALKER



17-5803
(115V/60 Hz)
17-5853
(230V/50 Hz)

FLEX



17-5707
(115V/60 Hz)
17-5757
(230V/50 Hz)

FLEX Machine Weight: 331 lbs. (150.1 kg)

FLEX Walker Machine Weight: 370 lbs. (167.8 kg)

CONDITIONING

- Uses Sanction Technology™ to measure conditioner volume before applying to lane
- Variable Speed Buffer option (see upgrades)
- DUO conditioning system (two pumps and two conditioner cartridges)
- DUO transfer system
- Two pre-filled/refillable conditioner cartridges
- Alternate two conditioners in one pass
- Adjustable microliter streams (per load setting)
- Ability to condition each lane in less than 90 seconds
- Conditioner float switches with low level warning message
- Board-to-board pattern control
- "Oil Only" function
- Touchscreen control of oil pump calibration

CLEANING

- Cleaner Mixing System option (see upgrades)
- Squeegee cartridge for easy replacement of blades
- Sprayless cleaning system
- Ability to monitor and adjust cleaner output
- Cleaner float switches with low level warning message
- Large waste recovery tank (50+ lanes before emptying)
- Duster/cleaning cloth waste roll on top for easy removal
- Patented cushion roller wrap for better cleaning
- Super quiet DC vacuum motor
- "Clean Only" function
- "Dust Only" function
- Touchscreen control of cleaner pump calibration

DRIVE

- Patented six variable drive speeds
- Independent adjustable cleaning speed
- Self-adjusting drive speeds
- LED arrow for better operator positioning
- Dual Drive System

TOUCHSCREEN/PLC

- Full color 7" touchscreen display
- Three programs for both AM and PM
- Stores 30 programs in memory
- Test input/output menu option
- Full detailed error messages

BATTERIES

- Single lightweight lithium battery
- Three battery options based on number of lanes conditioned per day
- External battery charger

SPECIAL FEATURES

- Pin Deck Treatment Spray System option (see upgrades)
- Easy sliding detachable lid assembly
- KOSI™ software kit included (Kegel Online Support Interface)

WALKER ONLY FEATURES

- Zero Turn Radius lane to lane walking function
- Auto-aligning lane whiskers
- Smart processor auto-align memory
- Object detection
- Automatic burn pair



FLEX BONUS WARRANTY

Receive an 18 month warranty with an additional 18 months if you agree to only use Kegel lane maintenance products in your lane machine.

UPGRADES

Pin Deck Treatment System 164-8202

- Insert Spot On Pin Deck Spray directly in your lane machine for simple application

Cleaner Mixing System*

- Self-mixing cleaner adjustments
- Precise mixing ratios

Variable Speed Buffer*

- Ability to customize four preset buffer speeds
- More control of front to back taper

Batteries

- Each machine comes with our K2 Energy® lithium battery
- Upgrade to larger battery based on number of lanes conditioned per day



158-1634**
(40 lanes)



158-1634BU
(62 lanes)



158-1634CU
(90 lanes)

* Factory upgrade (must be installed at time of purchase).

** All FLEX Machines come standard with battery 158-1634.





IKON™

High Tech Made Easy

The all new IKON is a battery powered combination lane machine that incorporates Kegel's proven technology with the modern styling of our latest machine, the FLEX.

The IKON uses Sanction Technology™ for the conditioning system which is reliable, verifiable, and accurate to $\pm 1\%$ with continued precision of $\pm 0.5\%$ after millions of cycles.

For cleaning, the IKON utilizes a sprayless system, which cleans the lane without any overspray into the gutters, keeping your customers and pinsetters cleaner.

Kegel's patented conditioning and cleaner systems are the only ones that can be checked and verified before you begin lane maintenance - now that's peace of mind.



FEATURES

- Sanction Technology™ Conditioning System with forward and reverse capabilities
- DUO Transfer System enhances the smoothness of the pattern and allows for easy pattern changes
- Patented sprayless cleaning system
- Full color 3.5" touchscreen display
- PLC stores 15 patterns in memory
- Choose from 3 different size lithium batteries based on your bowling center's needs or number of lanes conditioned per day
- Conditions each lane in less than 90 seconds

TECHNICAL SPECIFICATIONS

- Part Number:
17-5900 (115V/60 Hz)
17-5950 (230V/50 Hz)
- Weight without the battery: 330 lbs (149.7 Kg)
- Battery Specifications
158-1634 (Red) 25.6 Ah | 24 lbs (10.8 Kg) - Standard
158-1634BU (Orange) 38.4 Ah | 29 lbs (13.1 Kg) - Upgrade
158-1634CU (Yellow) 51.2 Ah | 39 lbs (17.6 Kg) - Upgrade



IKON BONUS WARRANTY

Receive an 18 month warranty with an additional 18 months if you agree to only use Kegel lane maintenance products in your lane machine.



Affordable Quality



The Crossfire is a compact, durable and highly functional lane machine at a very affordable price. This wick combination lane machine allows small centers to experience high quality lane maintenance only Kegel can deliver.

Features:

- Cleans and conditions the lane in about 80 seconds
- On-board keypad for simple machine programming
- 6 High-Flow Wick Pads (upgradeable to 8)
- 12 Lane Conditioner Capacity (upgradeable to 60)
- 32 Lane Cleaner Capacity
- 3 Drive Speeds for enhanced pattern taper
- Compact Design

Machine Weight: 275 lbs. (124.7 kg)

Part Number:

Crossfire - 6 PAD MODEL C

17-5200C (115V/60 Hz) 6 PAD/CAM MACHINE

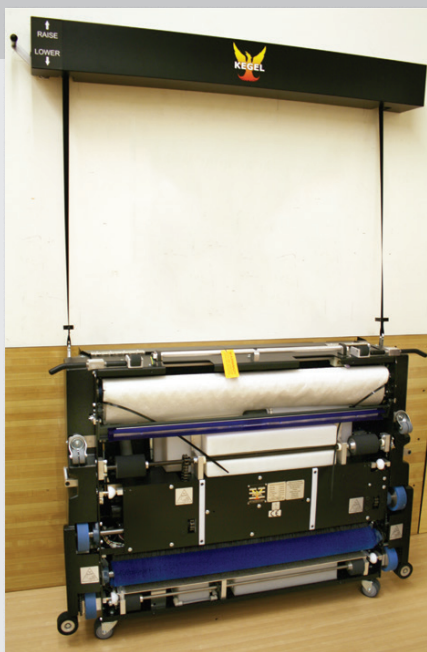
17-5250C (230V/50 Hz) 6 PAD/CAM MACHINE

Optional Upgrade Kit

Increase to 8 Wick Pads and Conditioner Capacity to 60 lanes

158-8241 - CROSSFIRE UPGRADE KIT - 115V

158-8241E - CROSSFIRE UPGRADE KIT - 230V



Lane Machine Assist

One person can quickly and easily raise and lower their lane machine safely.

Physical Properties:

- Color: Black
- Dimensions: Width: 60" | Height: 8" | Depth: 8"
- Lifting Capacity: Any Kegel Lane Machine
- Packaging: Assembled and ready to mount

Part Number: 154-8510

(Must be installed by a qualified contractor.)

Bracket Kit for all models

Part Number: 154-8520

Replacement Strap Kit

Part Number: 154-8519

LANE MACHINE COMPARISON CHART

	FLEX WALKER	FLEX	IKON
CONDITIONING			
Sanction Technology™ fluid metering conditioning system	✘	✔	✘
Conditions each lane in less than 90 seconds	✘	✔	✘
Conditioner float switches with low level warning message	✘	✔	✘
Left-Right pattern control	✘	✔	✘
"Oil Only" function	✘	✔	✘
Touchscreen control of microliter stream	✘	✔	
Touchscreen control of oil pump calibration	✘	✔	
DVO conditioning system (two pumps and two conditioner cartridges)	✘	✔	
DVO transfer system (roller and single transfer brush)	✘	✔	✘
Two pre-filled/refillable conditioner cartridges	✘	✔	
Ability to alternate two conditioners in one pass	✘	✔	
Board-to-board pattern control	✘	✔	✘
Measure conditioner volume per board stream before applying to lane	✘	✔	✘
Adjustable microliter streams (per load setting)	✘	✔	
Different conditioners in each cartridge	✘	✔	
4 Variable Buffer speeds	OPTIONAL	OPTIONAL	
CLEANING			
Sprayless cleaning system	✘	✔	✘
Ability to monitor and adjust cleaner output to the milliliter	✘	✔	✘
Cleaner float switches with low level warning message	✘	✔	✘
Large waste recovery tank (50+ lanes before emptying)	✘	✔	✘
Duster/Cleaning cloth waste roll on top for easy removal	✘	✔	✘
Patented cushion roller wrap for better cleaning	✘	✔	✘
Ultra quiet DC vacuum motor	✘	✔	✘
"Clean Only" function	✘	✔	✘
"Dust Only" function	✘	✔	✘
Adjustable "End Cleaning" and "Return" distance	✘	✔	✘
Multi-adjustment squeegee assembly	✘	✔	✘
Touchscreen control of cleaner volume	✘	✔	✘
Squeegee cartridge for easy replacement of blades	✘	✔	✘
Touchscreen control of cleaner pump calibration	✘	✔	
Cleaner supply tank with large opening for filling	✘	✔	✘
Recovery tank with handles for better transporting/emptying	✘	✔	✘
Self-mixing cleaner system	OPTIONAL	OPTIONAL	
DRIVE			
Patented six variable drive speeds	✘	✔	✘
Independent adjustable cleaning speed	✘	✔	✘
Self-adjusting drive speeds	✘	✔	✘
Zero Turn Radius lane to lane walking function	✘		
Auto-aligning lane whisksers	✘		
Smart processor auto-align memory	✘		
Object detection	✘		
LED arrow for better operator positioning	✘	✔	
KEYPAD/PLC			
Full Color 3.5" touchscreen display			✘
Full Color 7" touchscreen display	✘	✔	
One program for AM and PM			✘
Three programs for AM and PM	✘	✔	
Automatic burn pair	✘	✔	
Stores 15 programs in memory			✘
Stores 30 programs in memory	✘	✔	
Test input/output menu option	✘	✔	✘
Error messages displayed			✘
Full detailed error messages	✘	✔	
BATTERIES			
Single lightweight lithium battery	✘	✔	✘
External battery charger	✘	✔	✘
3 lithium battery options based on number of lanes conditioned per day	✘	✔	✘
SPECIAL FEATURES			
KOSI™ software kit included (Kegel Online Support Interface)	✘	✔	✘
WI-FI Connectivity Kit	✘	✔	✘
Pin Deck treatment spray system	OPTIONAL	OPTIONAL	

Lane Conditioners



CURVE™

For Sanction Technology™ Lane Machines

- Viscosity: 41.0 cps.
- Surface Tension: 22.0 dyn/cm

Part Number: 156-8145

- Shipping Weight: 40 lbs. (18.1 kg)
- One Container: 1.25 gallon (4.73 liters)
- Packaging: 4 containers per case
5 gallons (19 liters)



Part Number: 156-8145C

- Shipping Weight: 38.5 lbs. (17.4 kg)
- One cartridge: 0.4 gallons (1.5 liters)
- Packaging: 12 cartridges per case
4.75 gallons (18 liters)



CURRENT™

With the newest member in our line of blendable conditioners, whether you want more hook, less hook, or something in-between, the perfect lane condition is up to you.

For Sanction Technology™ Lane Machines

- Viscosity: 52.0 cps.
- Surface Tension: 23.3 dyn/cm

Part Number: 156-8175

- Shipping Weight: 40 lbs. (18.1 kg)
- One Container: 1.25 gallon (4.73 liters)
- Packaging: 4 containers per case
5 gallons (19 liters)



Part Number: 156-8175C

- Shipping Weight: 38.5 lbs. (17.4 kg)
- One cartridge: 0.4 gallons (1.5 liters)
- Packaging: 12 cartridges per case
4.75 gallons (18 liters)



FIRE™

For more hook or slick lane surfaces

For Sanction Technology™ Lane Machines

- Viscosity: 45.1 cps.
- Surface Tension: 23.6 dyn/cm

Part Number: 156-8135

- Shipping Weight: 40 lbs. (18.1 kg)
- One Container: 1.25 gallon (4.73 liters)
- Packaging: 4 containers per case
5 gallons (19 liters)



Part Number: 156-8135C

- Shipping Weight: 38.5 lbs. (17.4 kg)
- One cartridge: 0.4 gallons (1.5 liters)
- Packaging: 12 cartridges per case
4.75 gallons (18 liters)



ICE™

For more hold area or high friction lane surfaces

For Sanction Technology™ Lane Machines

- Viscosity: 40.9 cps.
- Surface Tension: 23.2 dyn/cm

Part Number: 156-8130

- Shipping Weight: 40 lbs. (18.1 kg)
- One Container: 1.25 gallon (4.73 liters)
- Packaging: 4 containers per case
5 gallons (19 liters)



Part Number: 156-8130C

- Shipping Weight: 38.5 lbs. (17.4 kg)
- One cartridge: 0.4 gallons (1.5 liters)
- Packaging: 12 cartridges per case
4.75 gallons (18 liters)

Lane Conditioners

WICK-PAD CONDITIONER



Physical Properties:

- Viscosity: 24.1 cps.
- Surface Tension: 23.6 dyn/cm.
- Shipping Weight: 40 lbs. (18.1 kg)
- One Container: 1.25 gallon (4.73 liters)
- Packaging: 4 containers per case 5 gallons (19 liters)

Part Number: 156-8105

WICK-PAD & SANCTION® CONDITIONERS



Physical Properties:

- Viscosity: 31.2 cps.
- Surface Tension: 23.7 dyn/cm.
- Shipping Weight: 40 lbs. (18.1 kg)
- One Container: 1.25 gallon (4.73 liters)
- Packaging: 4 containers per case 5 gallons (19 liters)

Part Number: 156-8095



Physical Properties:

- Viscosity: 31.3 cps.
- Surface Tension: 23.5 dyn/cm.
- Shipping Weight: 40 lbs. (18.1 kg)
- One Container: 1.25 gallon (4.73 liters)
- Packaging: 4 containers per case 5 gallons (19 liters)

Part Number: 156-8125

SANCTION® CONDITIONERS



Physical Properties:

- Viscosity: 36.5 cps.
- Surface Tension: 23.1 dyn/cm.
- Shipping Weight: 40 lbs. (18.1 kg)
- One Container: 1.25 gallon (4.73 liters)
- Packaging: 4 containers per case 5 gallons (19 liters)

Part Number: 156-8115



Physical Properties:

- Viscosity: 47.3 cps.
- Surface Tension: 22.7 dyn/cm.
- Shipping Weight: 40 lbs. (18.1 kg)
- One Container: 1.25 gallon (4.73 liters)
- Packaging: 4 containers per case 5 gallons (19 liters)

Part Number: 156-8025



Physical Properties:

- Viscosity: 50.3 cps.
- Surface Tension: 23.9 dyn/cm.
- Shipping Weight: 40 lbs. (18.1 kg)
- One Container: 1.25 gallon (4.73 liters)
- Packaging: 4 containers per case 5 gallons (19 liters)

Part Number: 156-8075

Conditioner Comparison

SANCTION TECHNOLOGY™									
PROPERTIES	CURRENT	CURVE	FIRE	ICE	NAVIGATE	INFINITY	PRODIGY	DEFENSE-S	OFFENSE HV
VISCOSITY <small>(at 72.5 °F / 22.8 °C)</small>	52	41	45.1	40.9	31.3	36.5	31.2	47.3	50.3
CHARACTERISTICS									
Lineage (Best for)	Any	League	League / Tournament	League / Tournament	Open Play / League	League / Tournament	Open Play	League	League
Average Pin Calls	Low/None	Low	Low/Medium	Low/Medium	Low	Medium	Low/None	High	Medium
Cleanability	Moderate	Moderate	Easy	Easy	Easy	Moderate	Easy	Difficult	Moderate
LANE SURFACES									
High Friction Surfaces	Best	Better	Good	Best	Better	Best	Better	Best	Good
Medium Friction Surfaces	Best	Best	Better	Better	Better	Better	Best	Better	Better
Low Friction Surfaces	Better	Better	Best	Good	Better	Good	Best	Good	Best

WICK-PAD TECHNOLOGY			
PROPERTIES	NAVIGATE	PRODIGY	CROSSFIRE
VISCOSITY <small>(at 72.5 °F / 22.8 °C)</small>	31.3	31.2	24.1
WICKING TIME	13 minutes	14 minutes	10 minutes
CHARACTERISTICS			
Lineage (Best for)	Open Play / League	Open Play	Open Play / League
Average Pin Calls	Low	Low	Low
Cleanability	Easy	Easy	Easy
LANE SURFACES			
High Friction Surfaces	Good	Better	Best
Medium Friction Surfaces	Better	Better	Best
Low Friction Surfaces	Better	Best	Good

Lane Cleaners



Physical Properties:

- Designed for low friction surfaces and stronger backend reaction
- pH: 11.5
- Shipping Weight: 10 lbs. (4.5 kg)
- One Container: 1 Gallon (3.29 liters)
- Packaging: 1 container per case

Part Number: 156-8435



Physical Properties:

- Designed for high friction surfaces
- pH: 12.8
- Shipping Weight: 10 lbs. (4.5 kg)
- One Container: 1 Gallon (3.29 liters)
- Packaging: 1 container per case

Part Number: 156-8425



Physical Properties:

- pH: 7.8
- Appearance: White Tablet with Citrus Scent
- Tablet Weight: 42 g
- Shipping Weight: 3 lbs. (1.4 kg)
- One Bag: 24 tablets

Part Number: 156-8500B

Note: All Kegel cleaners meet European compliance requirements.



Physical Properties:

- pH: 12.6
- Shipping Weight: 46 lbs. (20.8 kg)
- One Container: 2.5 gallons (9.4 liters)
- Packaging: 2 containers per case

Part Number: 156-8405

Other Supplies



EZ Core Technology makes changing cloth "Quick & EZ"! Stop handling dirty cloth and get ultimate cleaning results.

Physical Properties:

- Color: White
- Roll Dimensions: 43" wide x 60' long
- Shipping Weight: 16 lbs. (7.2 kg)
- Packaging: 4 rolls per case

Part Number:

K2 Select (Reusable PVC Core): 153-0047EZ

K2 Kloth (Cardboard Core): 153-0047P

Center Care Products



Spot On™ Pin Deck Spray

Spot On Pin Deck Spray helps you improve pin carry to eliminate off-spot pins and out-of-ranges. Spot On is sold in a spray can to be used in FLEX lane machines with the Pin Deck Treatment Spray System to apply automatically. Or purchase the new gallon size which can be used manually with your favorite spraying device!



- One Can: 14 oz. (0.41 liter)
- Packaging: 4 cans per case

Part Number: 156-8310

- One Container: 1 gallon (3.79 liters)
- Packaging: 1 container per case

Part Number: 156-8311



Balance™ Approach All-In-One

Balance is the all-in-one solution to maximize the performance of your synthetic approaches. With one product you can create an even and uniform surface for optimal slide conditions. Clean and condition your approaches in one simple application. Use with a rotary buffer.

- One Bottle: 16 oz. (0.47 liters)
- Packaging: 4 bottles per case

Part Number: 156-8320



Buffing Pads



Buffing Pad (White)

This 21" buffing pad is made with absorbent synthetic blended yarn. Gently clean away dust from less textured approaches. Machine-washable.

Part Number: 159-4511



Buffing Pad (Green & White)

With green scrubbing stripes on both sides, this 21" buffing pad offers a little something extra. Perfect for more textured approach surfaces, this buffing pad allows you to gently loosen and remove dirt build-up from the pores of your approach. Machine-washable.

Part Number: 159-4510

Microfiber Approach and Utility Mops

Color-coded to separate your approach mops from other mops used in less sensitive areas of your center. These high performance microfiber mops grab dirt and dust for quick and easy cleaning. Approach Mop is ideal for synthetic approaches. Utility Mop is perfect for cleaning in the pit, bowlers area, and elsewhere throughout your center. Machine-washable.



Approach Mop (Green)

- 36" Approach Mop only - 159-4402
- 36" Approach Mop with Handle Assembly - 159-4402C
- 48" Approach Mop only - 159-4403
- 48" Approach Mop with Handle Assembly - 159-4403C



Approach Mop (White)

- 24" Approach Mop only - 159-4420
- 24" Approach Mop with Handle Assembly - 159-4420C
- 36" Approach Mop only - 159-4421
- 36" Approach Mop with Handle Assembly - 159-4421C
- 48" Approach Mop only - 159-4422
- 48" Approach Mop with Handle Assembly - 159-4422C



Utility Mop (Blue)

- 18" Utility Mop only - 159-4410
- 18" Utility Mop with Handle Assembly - 159-4410C
- 24" Utility Mop only - 159-4411
- 24" Utility Mop with Handle Assembly - 159-4411C
- 36" Utility Mop only - 159-4412
- 36" Utility Mop with Handle Assembly - 159-4412C

Industrial Approach Mop



This industrial white approach mop is made of durable non-looped cotton strands that easily lift away dirt and dust. Recommended for wood approaches. Machine-washable.

- 24" Approach Mop only (White) - 159-4430
- 24" Approach Mop with Handle Assembly - 159-4430C
- 36" Approach Mop only (White) - 159-4431
- 36" Approach Mop with Handle Assembly - 159-4431C
- 48" Approach Mop only (White) - 159-4432
- 48" Approach Mop with Handle Assembly - 159-4432C

Gutter Mop



This white gutter mop is made of durable non-looped cotton strands. Recommended for all type gutters. Machine-washable.

- Gutter Mop - 159-4400
- Gutter Mop Frame and Handle only - 159-4400F
- Gutter Mop Complete with Frame and Handle - 159-4400C

Frames and Jaws

- 18" Wire Frame - 159-4450
- 24" Wire Frame - 159-4451
- 36" Wire Frame - 159-4452
- 48" Wire Frame - 159-4453
- Handle Assembly Only - 159-4455



PIN CLEANING MACHINE & CLEANER CONCENTRATE

Physical Properties:

- Cleans ALL types of bowling pins
- Includes attachment to sand base of pins
- Weight: 37 pounds (16.7 kg)

Part Number:
17-0040 – 115V/60 Hz
17-0040E – 230V/50 Hz



Physical Properties:

- Cleans ALL types of bowling pins
- Not harmful to skin
- For use in ALL pin cleaning machines
- One Container: 1 gallon (3.79 liters)
- Packaging: One container per case
- Concentrated cleaner
- pH: 9.2

Part Number: 156-8800



MOPPING TABLET



Fizzion Mopping Tablets are an all-purpose floor cleaner designed for bowling centers. Its formula was created to leave NO sticky residue so your bowlers' shoes stay clean both on and off the lanes.

- Mixes up fresh every time you mop for maximum power
- Cuts through dirt & grease with ease
- Easily lifts set-in grout stains
- Includes mild bleaching action
- Concentrated product reduces waste & pollution
- 45 pre-measured tablets to control cost
- One tablet makes 4 gallons (15.1 liters)

Part Number: 156-8565B



REVIVE™ BALL CLEANER

Physical Properties:

- pH: 8.4
- Easy to use - spray on, wipe off
- Gentle on the skin
- Can be used on ALL bowling balls

Part Number:
156-8768 - 8oz. (0.236 l) bottle
156-8768C - Case (12 - 8oz. bottles)
156-8762 - 32oz. (0.9 l) bottle



Coaching Tools



The Arrow is a 3D Reference Tool that gives players a physical reference point to see when working on a variety of drills. Visualize your set-up position, pushaway, finish position and more!

Arrow - 157-8850



Bowling Ball is not included.

Coaching Tools



SPECTO[®] BOWLING

Specto is a new tracking system for centers, bowlers, and coaches. It records information about bowlers' shots using an advanced sensor and displays it to them on an easy-to-use app.

Specto Complete System - 157-8602 (115v/60Hz)
Specto Complete System - 157-8602E (220v/50Hz)

Calibration Stick - 157-8604



Controller and Protection Guard are not pictured.

TORCH[™] LANE TARGETING LIGHT

The Torch is a patent-pending light targeting tool used to help with accuracy and alignment. Using LED lights, it reflects a path of light on the lane to help you select the correct launch angle and hit your target time after time.

Torch Complete System - 157-8800 (115v/60Hz-220v/50Hz)

Upgrades

Torch 2-Foot & 3-Foot White LED Light Upgrade - 157-8808

Torch Tilt Bar Upgrade - 157-8809

Optional Battery Upgrade - 157-8801

Replacement Parts

Torch Battery Charger Assembly - 157-8805

2 Foot White LED Light (Middle) - 157-8806

3 Foot White LED Light (Top) - 157-8807

4 Foot White LED Light (Bottom) - 157-8802

5 Foot White LED Light (Top) - 157-8803

Power Supply - 157-1805A

Dimmer - 157-1806A

Power Cord (9.8ft DC) - 157-1808

TORCHX[™] LANE TARGETING LIGHT

Torch-X Features:

- Multiple light color options
- Tilt bar for precision alignment
- 2-piece top assembly for height adjustments
- Trigger switch flashes light on and off when you hit your target

Torch-X Lane Complete System - 157-8810



LEGEND	SUFFIX	MACHINE	SUFFIX	MACHINE
	IKN	IKON	KP	KUSTODIAN PLUS
	FWYEAR*	FLEX WALKER YEAR	KK	KUSTODIAN
	FXYEAR*	FLEX YEAR	EP	ELITE PLUS
	FXW	FLEX WALKER 2013-15	ELT	ELITE
	FLX	FLEX 2013-15	STD	STANDARD
	KW	KUSTODIAN WALKER	PXS	PHOENIX S
	ION	KUSTODIAN ION	PX	PHOENIX
	XF	CROSSFIRE		

* YEAR represents the model year in the serial number.
 Suffix represents all model variations unless model type is specifically indicated (i.e. KP-A).

Cleaning

- Recovery Tank** - 164-8017 IKN | FXW | FLX
- Recovery Tank Filter** (for tank 164-8017)
- 164-8017F - IKN | FXW | FLX (FLX-17733 / FXW-13229 and ABOVE)
- Recovery Tank Filter** (for tank 164-8017)
- 164-6114 - FXW | FLX (FLX-17732 / FXW-13228 and BELOW)
- Recovery Tank** - 153-8841 - XF | PXS-A,B | PX-A,B
- Recovery Tank Filter** (for tank 153-8841) - 153-8844 - XF
- Recovery Tank** - 154-8683 - ION-A | KP-A | KK | ELT | STD | PXS-C | PX-C
- Folded Recovery Tank Filter** (for tank 154-8683) - 154-8684
- Recovery Tank** - 158-8434 - ION-B | KP-B
- Recovery Tank** - 158-8617 - KW | ION-C,D
- Recovery Tank Filter** (for tanks 158-8434, 158-8617, 164-8017) - 158-0406
- Recovery Tank Gasket** (for tanks 158-8434, 158-8617, 164-8017) - 158-0405



Upgraded Cleaner Mixing System

- Complete Cleaner Tank Assembly** - 164-8043
- Complete Water Tank Assembly** - 164-8041
- Cleaner Pump Assembly for Concentrate**
- 164-8027
- Cleaner Tubing #14 for Super Concentrate**
- 164-8025

- Cleaner Tubing #16 for Regular Concentrate**
- 164-8026
- Supply Tank Cap**
- 164-8081
- Supply Tank Gasket**
- 164-0021

Cleaning

Complete Cleaner Tank Assembly - 164-8042 - FXW | FLX
Complete Supply Tank Assembly - 154-8840 - XF | KK | PX-C
Complete Cleaner Tank Assembly - 154-8680 - EP | ELT | STD | PXS-C
Complete Cleaner Tank Assembly - 158-8433C - IKN | KW | ION-B,C,D | KP-B
Cleaner Supply Tank Only - 158-8433 - KW | ION-B,C,D | KP-B
Cleaner Supply Tank Only - 154-8894 - ION-A | KP-A
Cleaner Supply Tank Float Switch - 154-8693



Cushion Roller With Cloth Cover - 153-8839
Compatible with IKN | FXW | FLX | KW | ION | XF | KP | EP

Use same part number to upgrade these models: **KK | ELT | STD**
If ordering to upgrade KK, ELT & STD you will need (2) 153-6421S spacers and hardware (153-2069).

Cushion Roller - 153-8838 - KK | ELT | STD

PVC Take-Up Reel - 153-8824

(Not required with K2 Select EZ Core Cloth)

PVC Take-Up Reel Clamp - 154-6248 (Not Pictured)

Complete Squeegee Assembly (Blue) - 153-0202D
KW | ION | XF | KP | KK | EP | ELT | STD | PXS-C

Replacement Squeegee Blades & Gasket Kit - 164-8038K
IKN | FXW | FLX (also for machines with upgraded Squeegee Cartridge)
Squeegee Gasket - 164-0003 - IKN | FLX | FXW

Replacement Squeegee Blades - Blue Pair - 153-8204E
Replacement Squeegee Blades - Brown Pair - 153-8834



Vacuum Motor - See Motors on pages 28 & 30

Following Items are Not Pictured

Vacuum Housing - 153-0204H

Fan Blade - 153-0204F

Flexible Hose (Sold by the Inch) - 154-0260

Sprayless Cleaner Pumps



Cleaner Pump Drive Motor

154-8874 (115VAC)

154-8875 (230VAC)

158-8404 (24VDC)

Cleaner Pump Assembly - 158-8404D

Norprene® Tubing - 154-0861B

Cleaner Volume Control Valve - 154-1855

Cleaner Tip & Hose Assembly - 154-8852

Potentiometer for Cleaner Control

154-8846 - KP

158-8413 - KW | ION

Complete Cleaner Pump Assembly

154-8859 (115VAC) - KP-A | EP

154-8859E (230VAC) - KP-A | EP

Complete Cleaner Pump Assembly

158-8404C (24VDC) - KW | ION-A,B

154-8847 (24VDC) - KP-B

Solenoid Valve (3-Way)

154-8876A (115VAC) - KP-A Only | EP

154-1852 (230VAC) - KP-A Only | EP

Kustodian PLUS (Model A Only)

24VDC Cleaner Pump Conversion Kit

154-8844 (115V)

154-8845 (230V)



Cleaner Tank Filter - 154-0212B

1/2" O-Ring - 154-0287C



Universal In-Line Filter Assembly - 154-8867A

In-Line Filter Assembly - 154-8887 - IKN | KW | ION | KP | EP

Cleaner Funnels

Cleaner Funnel - Long Stem

158-8252

Cleaner Funnel - Short Stem

154-8647

Cleaner Funnel - No Stem

153-0252



Cleaning System Tubing

(Sold by the Inch)

1/4" - 153-0208S - for Spray Jet Machines

1/4" - 154-0202C - Clear

Spray Jet Cleaner Pumps

Kegel Cleaner Spray Pumps

158-8212 (115V AC)

158-8213 (230V AC)

For older Standard AC and SE Machines with Pump Mounted Over Buffer Motor.

154-8651A (115V AC)

154-8652A (230V AC)



Cleaner Pump Repair Kit

Valve/Diaphragm Kit

for Kegel Pump

158-8212K



Spray Pressure Regulator Upgrade

154-8268



Spray Jet Cup Assembly Upgrade

154-8692

Hose and Elbow Kit

With this kit, you will have all of the tubing and fittings to replace the plumbing in the cleaning system of your lane machine.

154-8827 - KK

154-8677 - STD

Spray Jet Assembly

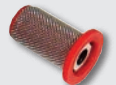
Tip Retainer - 153-0218

Spray Jet Body - 153-6252

Nylon Body - 153-0217



Screen Check Valve - 153-0220



Outside Spray Tip (1501) - 154-0007

Inside Spray Tip (8003) - 153-0207

Inside Spray Tip (11003) - 153-0207A



Cleaner Tip Check Valve (Pkg of 5)

154-0862K - KW | ION | KP | EP



Cleaner Tip with Check Valve - 164-0012M

Conditioning



FLEX Conditioner Cartridge
(Complete with Valve Assembly) - 164-8015 (Pkg of 2)
FLEX Conditioner Cartridge
(Without Valve Assembly) - 164-8015A
Cartridge Plunger - 164-8015P
Cartridge Cap (with 38mm hole)
164-0004

Viton O-Ring for Cap
164-6079
Viton O-Ring for Plunger (outside)
164-6079
FLEX Conditioner Sub Tanks
164-6015A - 164-6015B
FLEX Conditioner Sub Tank Float Switch
154-8693
FLEX Conditioner Sub Tank Filter Assembly
154-0212
Sub Tank O-Ring
164-6173
Sub Tank Replacement Plug
164-8082

Conditioner Transfer System

Single Conditioner Transfer Brush Assembly - 164-0866



Conditioner Transfer Brush Assembly - 154-0866 - KW | ION | KP | EP
Buffer Brush - 154-8641 - KW | ION | XF | KP | KK | EP | ELT | STD | PXS-C | PX-C
Buffer Brush - 164-8001 - FXW | FLX
Buffer Brush - 164-8001A - IKN | FW16,17 | FX16,17,18
Transfer Roller - 154-8338 - PX-C
Transfer Roller - 154-8608 - KK | ELT | STD | PXS-C
Transfer Roller - 158-8204 - XF
Transfer Roller - 164-8008 - IKN | FXW | FLX
Transfer Roller Duo Upgrade - 158-8441

Transfer Roller Belt Duo System - 154-9203 - FXW | FLX



Buffer Belt 315L050 - 164-9019 - IKN
Buffer Belt 255L050 - 154-9615 - ION-A,B | KP | KK | EP | ELT | STD | PXS-C
Buffer Belt 225L050 - 153-9817 - PX-C
Buffer Belt 210L050 - 158-9201 - XF
Buffer Belt 263L050 - 158-9026 - KW | ION-D
Buffer Belt Standard 248L050 - 164-9006 - FXW | FLX
Buffer Belt for Variable Speed Upgrade 255L050- 154-9615 - FXW | FLX
(FLX-17733 / FXW-13229 and ABOVE)
Buffer Belt for Variable Speed Upgrade 248L050- 164-9006 - FXW | FLX
(FLX-17732 / FXW-13228 and BELOW)
Buffer Belt for Non-Variable Buffer 352L050 - 164-9016 - FXW16,17, 18 | FLX16,17,18
Buffer Belt for Variable Buffer 356L050 - 164-9017 - FXW16,17,18 | FLX16,17,18



Head Drive Belt - 154-9201
Compatible with ALL applications.

Fluid Metering Components

1. Pulse Suppression Assembly

164-8021 - FXW | FLX

154-8660 - EP | ELT | STD | PXS-C

154-8816 - IKN | KW | ION | KP | KK

2. Pressure Gauge (60 psi) - 158-1613

3. Oil Control Valve (24V DC) - 154-1209

Oil Control Valve (24V DC - Extended Wires & Fittings) - 154-8298

4. Vent Valve

154-8817 - IKN | KW | ION | KP | EP | ELT | STD | PXS-C

164-8007 - FXW | FLX

5. Oil Tank Assembly with Fittings/Float

154-8682 - IKN | KW | ION | KP | EP | ELT | STD | PXS-C

Oil Tank Assembly with Fittings

154-8842 - KK

6. Oil Tank Filter - 154-0212

7. Float Switch Assembly

154-1203 - XF

154-8693 - IKN | KW | ION | KP | EP | ELT | PXS-C | PX-C

154-8203A - ELT | STD (7" Vertical for tank 154-8615C)

8. Belt for Conditioner Pump Motor

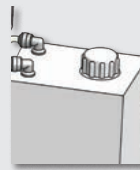
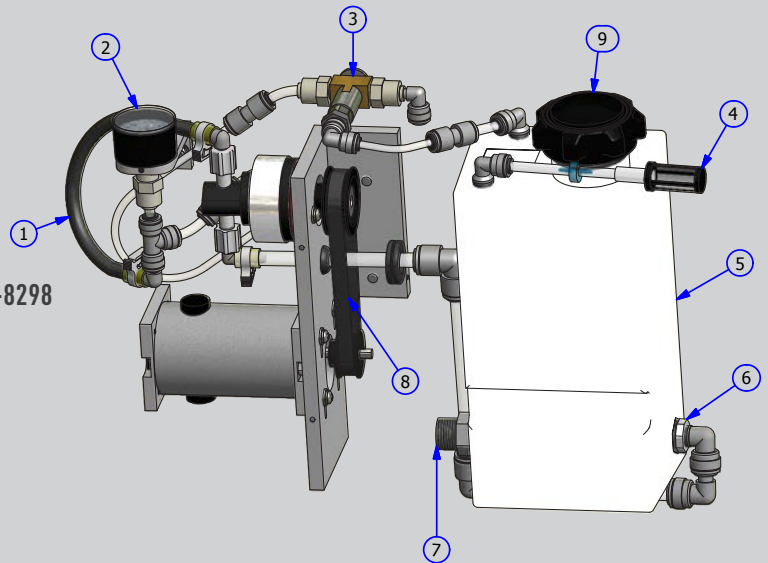
154-9202A (60Hz) 154-9215 (50Hz)

164-9008 - FXW | FLX

9. Oil Tank Cap Assembly

164-8081 - Complete

164-0021 - Gasket only



Oil Tank Cap Assembly

154-0832 - Complete

154-0832C - Cap only

154-0832G - Gasket only

Tubing

Conditioning System Tubing

(Sold by the Inch)

3/16" - 154-0202B

1/4" - 154-0202A

3/8" - 154-0202

Conditioner Head Tip & Hose Holder Assembly (includes tubing)

3- 1/2" Tip Holder (Painted Machines with Transfer Roller) - 154-8883

4- 1/2" Tip Holder (Painted Machines with Transfer Brush) - 154-8851

5- 1/4" Tip Holder (Upgraded Transfer Brush Models) - 154-8896

Retaining Spring for Head - 153-2713

Oil Pencil Tip (Black Molded) - 154-6832

Replacement Felt

Felt (1/8" x 3") - (Sold by the Inch) - 154-0228S

Felt Strip on Splash Guard Tank - 154-8333 - PX-C Only

Felt Kit for Transfer and Spray Jet Wall

154-8669 - KK | ELT | STD | PXS-C

Felt for LDS Splash Guard

154-8690 - Painted Sanction Technology™ Machines

Felt Strip for Transfer Wall - 154-8669A - KW | ION | KP | EP

Felt Kit - 164-8212 - FXW | FLX

Graduated Cylinder (25ml) - 154-0215

Felt for Graduated Cylinder (25ml) - 154-0210

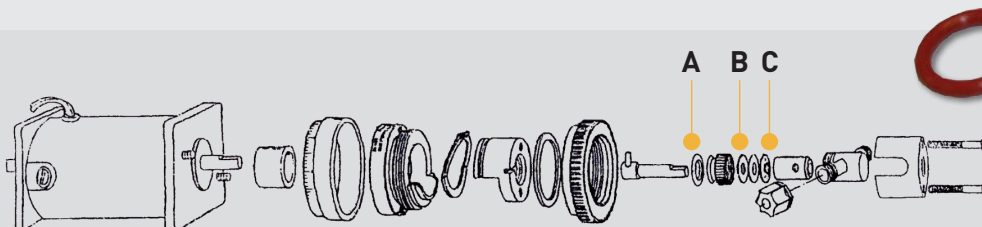
Graduated Cylinder (50ml) - 154-0215A

Felt for Graduated Cylinder (50ml) - 154-0210A

Oil Funnel with 3" Hose - 153-0052A

Funnel with Connecting Stem for
Conditioner Tank (Small) - 154-8648

Fluid Metering Oil Pump
154-1214



A. O-Ring for Fluid Metering Pump
(Orange) - 154-1214E

B. Gland Seal for Fluid Metering
Pump (White) - 154-1214D

C. Lip Seal for Fluid Metering
Pump (Red) - 154-1214A

Wicks



Glueless Wick Plate Assembly

3.125" - 153-8123 Only Compatible with PX-C
 3.125" - 158-8223 Only Compatible with XF



5.125" - 153-8125 Only Compatible with PX-C
 5.125" - 158-8225 Only Compatible with XF

7.125" - 153-8127 Only Compatible with PX-C
 7.125" - 158-8227 Only Compatible with XF

10.125" - 158-8230 Only Compatible with XF



Not Pictured

45" Wick Material for Glueless Wicks - 153-0005B (5")
Wick Material Stock for Glueless Wicks - 153-0005D - XF
 (Custom cut to be purchased by the inch)



Wick Spring (XF Only) - 153-2740

Solenoid Cable Assembly 8.25"
 153-8812A (PX-C)

Pattern Smoothing Pads

Pattern Smoothing Assembly - 154-8617

Velcro for Smoothing Pad
 154-8617V (10 per pack)

Smoothing Pad Spring
 153-2540A

PLC

PLC Components*



- CP1H PLC (w/o Ports) - 158-1610P
- CP1L PLC (115VAC - w/o Ports)* - 164-1230 - KK | KP A,B | XF
- CP1L PLC (24VDC - w/o Ports) - 164-1228 - ION B | KW B
- Serial Port Converter for CP1 - 158-1610S
- Analog Output - 164-1217 - FXW | FLX
- Communication Cable - 164-1235 - IKN
- Communication Cable - 158-1610D - FXW | FLX
- Communication Cable - 158-1610CC - KW C,D | ION C,D
- Communication Cable CP1L PLC - 154-8809
- CPM2A Keypad Cable - 154-1803
- CP1L Keypad Cable - 154-8809
- Replacement Battery CP1L - 158-1610B

Replacement PLC Kits*

*The Omron® CPM2A PLC is no longer available and has been replaced by the Omron® CP1L PLC. A replacement kit has been designed to make the necessary modification in the event a new PLC is needed.

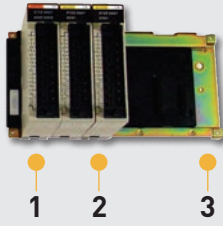
- DC Conversion Kit** - 158-8454 - KW A,B | ION A,B
 - AC Conversion Kit*** - 158-8254 - KK | KP A,B | XF-C | PX-C
 - Twido To CP1L Upgrade** - 158-8253 - XF A,B
- Additional upgrade kits may be necessary for KK A,B | KP A,B
 Contact Kegel for more information.

Touchscreen Components



- Touchscreen Display** - 158-8671 - KW C,D | ION C,D
- Touchscreen Display** - 164-8011 - FXW | FLX
- Touchscreen Protector** - 158-1612 - FXW | FLX
- Touchscreen Mounting Clip** - 158-1610TC - FXW | FLX (set of 2)
- Touchscreen Display** - 164-8803 - IKN
- Touchscreen Protector** - 164-1234 - IKN

- 154-8853C – Relay kit for Original Kustodian**
 (Version 9G and above) *If not already in machine this kit is needed for PLC upgrade
- 154-8853Z – Relay kit for Kustodian Plus**
 (Version 9Z and above) *If not already in machine this kit is needed for PLC upgrade



C200HG Items

1. **Input Module ID212** - 153-1816
2. **Output Module OC222** 154-8231 (With 24VDC Relay)
3. **Mounting Rack C200HW** - 154-1201B



Power Supply
C200HG - 154-1201P

154-1801M - PX-C Expansion Module

Omron® PLC Battery

- 153-1001C - C28H | C200H
- 154-1804 - CPM2A

Keypad

- 154-8806 - ION | KP | KK
- 154-8806C - XF (Omron®)
- 154-8807 - PX-C
- 154-8808 - Firebird

Keypad Overlay Decal

- 158-0802 - KW-B
- 154-0801 - ION | KP | KK
- 154-0251 - ELT | STD | PXS
- 158-0204 - XF (Twido®)
- 154-0801K - XF (Omron®)

Keypad Mounting Clips
(set of 2)
154-1802C

KOSI Kegel Online Support Interface



KOSI Pro Kit - 154-8781 - IKN | FXW | FLX
 USB to Serial Converter
 KOSI Cable (32 or 64 bit)
 USB Drive with KOSI Pro Software



KOSI Pro Kit for Kustodian - 154-8771
 USB to Serial Converter
 KOSI Cable (32 or 64 bit)
 USB Drive with KOSI Pro Software

WI-FI Connectivity Kit - 164-8821 - IKN | FXW | FLX
WI-FI Replacement Device - 164-8820 - IKN | FXW | FLX

KOSI Communication Kit - 154-8771B

USB to Serial Converter
 KOSI Cable (32 or 64 bit)



USB to Serial Converter
 157-1057



KOSI Cable
 (32 or 64 bit) - 154-8724

Batteries & Chargers

Kegel K2 Energy® Lithium Batteries



158-1634 (25.6 Ah)



158-1634B (38.4 Ah)



158-1634C (51.2 Ah)

Batteries				
Machine Type	Lanes Per Charge	KEGEL Charger Being Used	Battery Available	Kit Needed
ION-A,B	Up to 40	ProTech	158-1634	158-8654
	Up to 62	Any	158-1634B	158-8654
KW-A,B	Up to 40	ProTech/ProNautic	158-1634	158-8655
	Up to 62	Any	158-1634B	158-8655
KW ION-C,D	Up to 40	ProTech/ProNautic	158-1634	158-8655
	Up to 62	Any	158-1634B	158-8655
	Up to 90	Any	158-1634C	158-8655
IKN FXW FLX	Up to 40	ProNautic	158-1634	None
	Up to 62	ProNautic	158-1634B	None
	Up to 90	ProNautic	158-1634C	None



**ProNautic®
Chargers**

ProNautic® Chargers		
Machine Type	115V	230V
ION-A,B	158-8476	158-8476E
ION-C,D	164-8471P	164-8471PE
FXW FLX KW	164-8471	164-8471E

*This is a kit that includes the ProNautic® Charger along with the necessary hardware to convert your machine to an external charging unit as the internal unit is no longer available.

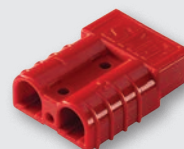
CVR Replacement Kit (2016 Flex and later)

164-8210

Converted DC to DC Step Up Assembly - CVR (FX18-121 / FW18-182 and later)

164-8209

Charger DC Cables	Description
158-8474	ProTech DC power cord assembly - 1 FT Internal
158-8475	ProTech DC power cord assembly - 6 FT External
164-8475	ProNautic DC power cord assembly - 6 FT External



Battery Disconnect Housing - Red

158-1407 (1 ea.)



Battery Disconnect Housing - Blue

158-1408 (1 ea.)



6 ga. Terminal - 158-1407A

10 ga. Terminal - 158-1407T

The disconnect housings automatically come with terminals for 10 ga. wire. If your lane machine has 6 ga. wire, order the 6 ga. terminals in addition to the housing.

Electrical Components

Power Cord Components

Description	115V AC	230V AC
Power Cord EP ELT STD PXS-C	154-8629	154-8630
Power Cord ION XF KP KK PX-C	154-8829	154-8830
Male Plug End (15A)	153-1025	153-1625
Male Plug End (20A)	153-1825	N/A
Female Twistlock Plug (15A)	153-1024	153-1624
Female Twistlock Plug (20A)	153-1822	153-1824
25' Charging Cord Assembly KW ION-A,B	158-8425	158-8425E
Velcro Strap For Cord	154-0242	154-0242

Push Button Replacements

Handle Button Replacement Assembly - 164-8013 - IKN | FLX

Handle Wire without Connector - 153-8424A

Handle Wire - 154-8893B - ION | KP

Handle Wire - 154-8624 - ELT | STD | PXS-C

Handle Button Replacement Assembly - 154-8824 - KK

Head Motor 6.0 μ F Capacitor

154-1208 - KP | KK | EP | ELT | STD | PXS

Oil Pump Motor 1.5 μ F Capacitor

154-1208B - KP | KK | EP | ELT | STD | PXS

Breakers



Rocker Breaker 10A - 154-1272

Rocker Breaker 15A - 154-1610

Blade Type Fuses

Fuse 25A - 158-1439 for CVR - KW | ION

Fuse 30A - 164-1214 for CVR on VB Upgrade and

Pro Nautic[®] Charger - IKN | FXW | FLX

Fuse 40A - 158-1440 for IOTA[®] Battery Chargers

Maxi-Fuse 40A (for Fuse Link) - 158-1454 - ION

Fuse Link Assembly - 158-8421 - ION

Fuse & Relay Kit



With these kits, you will have many of the small electronic pieces needed to keep you going. These kits contain three of each fuse used in the machine as well as fuse holders, spare relays, buttons, and switches.

154-8600F (115V) - STD | PXS-C

154-8600G (230V) - STD | PXS-C

154-8800F (115V) - KK-A,B

154-8800G (230V) - KK-A,B

154-8800J (115V) - KK-C

154-8800K (230V) - KK-C

154-8800R (115V) - KP

154-8800S (230V) - KP

154-8800C (115V) - XF

154-8800D (230V) - XF

158-8600F - KW-A,B | ION-A,B

158-8600G - KW-C,D | ION-C,D

164-8100F - FXW | FLX

164-8800F - IKN

Fuses

Panel Mount Fuse Holder (115V) - 153-1028

Fuse 0.5A (UL) - 154-1261

Fuse 0.75A (UL) - 154-1262

Fuse 1A (MDL) - 155-1229

Fuse 1.8A (UL) - 154-1265

Fuse 2.25A (UL) - 154-1266

Fuse 3.2A (UL) - 154-1267

Fuse 4A (UL) - 154-1268C

Fuse 7.5A (UL) - 154-1270

Fuse 8A (UL) - 154-1270C

Fuse 10A (UL) - 154-1273

Fuse 20A (UL) Ceramic - 154-1274C

Fuse 20A (UL) - 154-1274

Fuse 25A (MDA) Ceramic - 164-1222

Panel Mount Fuse Holder (230V) - 153-1028E

Fuse 315mA (IEC - 230V) - 154-1260E

Fuse 500mA (IEC - 230V) - 154-1261E

Fuse 1A (IEC - 230V) - 154-1264E

Fuse 1.6A (IEC - 230V) - 154-1265E

Fuse 4A (IEC - 230V) - 154-1267E

Fuse 6.3A (IEC - 230V) - 154-1269E

Electrical Components

Omron® Brand Relays



LY2 Relay
153-1016D (24V DC Coil)
LY2 Relay
153-1016 (115V)
153-1616 (230V)



LY3 Relay
153-1018 (115V)
153-1618 (230V)



LY4 Relay
153-1406 (115V)
154-1611 (230V)



MY4 Relay
(24V DC)
158-1427

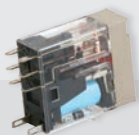


DPDT 10A
158-1462



PLC Output Relay (Short)
153-1032 (for Output Module OC221/OC222)
PLC Output Relay (Tall)
154-1215 (24V DC Coil - for Output Module OC222 only)

Omron® Relays for Sport Edition / FLEX / IKON Models



24VDC DPDT
158-1458



Solid State
158-1460



Super MY4 24V DC
(with Diode)
158-1463



LY3 Relay
(24V DC)
164-1231

Phoenix® Brand Relays



Secondary Relay Assembly
(24V DC)
154-1835 - KP | KK



2 Pole Relay
(10A - 24V DC)
158-1420G



2 Pole Relay
(15A - 24V DC)
158-1413

Automation Direct® Relays

Other Electrical Components



Duster Microswitch
(Large) 154-1603
IKN | FXW | FLX | KW | ION
| KP | KK | EP | ELT | PXS-C
| PX-C



Duster Microswitch
(Small) 153-1202
XF | PXS-A,B | PX-A,B



Microswitch with Roller
153-1203
for ALL Machines



Squeegee Microswitch
(Large) 154-1015
KK | ELT | STD | PXS-C |
PX-C



Arc Suppressor
158-1438

15K Resistor
(for cleaner speed control)
154-8848R



Proximity Sensor
154-1220

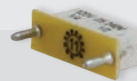
Proximity Sensor
158-1208 - XF-A



Contactor 24VDC
158-1465 - IKN | FXW | FLX
KW C,D | ION C,D
(Vacuum & Auto Shutdown
Relay)



Red Push Button
(Normally Open)
153-1408



Horsepower Resistor
0.025 Ω - 153-1015A
Horsepower Resistor
0.050 Ω - 153-1015



E-Stop Assembly for FLEX/IKON - 164-1223
(Includes Breaker, Black Box sold separately)
E-Stop Black Box for FLEX/IKON - 164-6161
FLEX E-Stop Breaker - 164-1223B
Prior to serial #FLX-17802 / FXW-13306 use part number 164-1223
(This will replace the discontinued Breaker and red triangle
shaped e-stop assembly)



2008 E-Stop (2-Hole Pattern)
154-1250A
Breaker for E-Stop
(2008 and later)
154-1251A

VOLTMETER TIPS



VOLTMETER SYMBOLS



Alternating Current
V AC
All 115V and 230V machines
that utilize a power cord.



Direct Current
V DC
All battery operated
machines / also used to
drive AC powered machines.



Continuity Check
Used to inspect fuses and
circuitry. A beep will sound
when fuse or circuit is
closed.



BASIC VOLTMETER OPERATIONS

To check voltage:

1. Turn dial on the voltmeter to desired test.
2. Place each probe into the wires of the component you are testing and turn component on.

To check continuity:

1. Touch both probes together to inspect the voltmeter for proper function.
2. Place the test probes at each end of the circuit to be tested.
3. Voltmeter will sound if circuit is not broken. No sound if there is a break in the line.

TECH TIP:

Always inspect power cord ends and battery connections when electrical problems occur.

Upgrades

DUO™ Transfer System

Transfer Brush System to DUO System
158-8430F

Smoother Pad Transfer System to DUO System
158-8430N - Only painted machines with transfer roller



Complete Squeegee Cartridge Assembly
164-8038

Handle Reinforcement Kit

154-8284 - ION A,B | KP | KK | ELT | EP | STD

Crossfire Upgrades

Complete Upgrade - Includes 8 Wicks with Cam Roller and Large Conditioner Supply Tank
158-8241 (115V) | 158-8241E (230V)

Conditioner Tank Upgrade

158-8215 (115V) | 158-8215E (230V)

8 Pad Wick & Cam Kit - 158-8214

Proximity Upgrades

LDS (Center) - 154-8672 - STD

Tach (External) - 154-8290 STD

Head Timing - 154-8673 - STD



Fail Safe Beam - 164-8827 - FLX | FXW

Pin Deck Treatment Upgrade

164-8227 - FLX13,14,15 | FXW13,14,15

LED Light Upgrade Kit for Supply Tanks

Easily monitor the level of supplies on machines with plastic molded tanks with this light that automatically illuminates when the splash guard is opened.

158-8672 KW | ION | KP-A,B

Kustodian Upgrades

Head Relay Upgrade Kit
154-8853C - KK-C

Drop Brush Upgrade Kit
154-8853Z - KP

Kustodian Model A to C Upgrade Kit - 154-8870
Serial Number: KK-0600 through KK-0810

Kustodian Model B to C Upgrade Kit - 154-8871
Serial Number: KK-0811 through KK-0987

Wheel Upgrades



6" Front Wheel Upgrade

Large 6" front wheel helps the lane machine transition on and off the lane with ease.

158-8733 ION | KP-B

3" Caster Upgrade

Dual 3" rear casters allow for better machine transition on and off the lane.

158-8731 KW | ION-C,D

158-8732 ION-A,B | KP-B



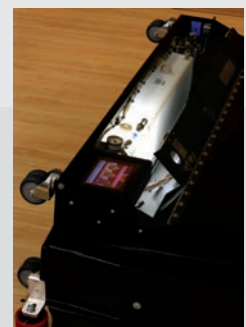
Power Button Relocation Kit

Relocate the power button to the splash guard allowing for easy access to turn the unit on.

158-8673 KW-D | ION-D



BEFORE



AFTER

Miscellaneous

Non-Adjustable Guide Rollers

- Guide Roller - 153-8410
- Guide Roller Shoulder Bolt - 153-2407
- Guide Roller Mounting Bar - 153-6417
- Guide Roller Spring - 153-2401
- SHCS 1/4-20 x 2-3/4" - 153-2211



Tune Up Kits



- IKN - 164-8800
- FXW | FLX - 164-8030
- FW16,17 | FX16,17,18 - 164-8030A
- KW - 158-8628
- ION - 158-8428
- KP | EP (115V) - 154-8686
- KP | EP (230V) - 154-8687
- KK | ELT | PXS-C | PX-C (115V) 154-8888
- STD (115V) - 154-8688
- XF (115V) - 158-8288
- XF (230V) - 158-8828E

Adjustable Guide Rollers



- Complete Front Assembly - 158-8643
- Front Wheel Only - 158-8637
- Complete Rear Assembly - 158-8642
- Rear Wheel Black - 164-8816 - IKN
- Rear Wheel Only - 158-8636
- Compression Spring - 153-2978

Whiskers

- Whisker Spring - 153-2946 - KW
- Black Vinyl Cap - 153-2941 - KW
- Complete Assembly - 158-8623 - KW
- Whisker Assembly - 164-8660 - FXW
- Whisker Assembly - 164-8660A - FW16,17

Momentary Wheel Assembly

- Wheel - 153-7005R
- Shaft - 153-6006
- Housing - 153-6029

Caster Wheels

- Lane to Lane Caster 2" 153-0812 (Heavy Duty)
- Lane to Lane Caster 3"



164-0022 - IKN | FLX - 2016 or later



Transport Caster

- 3" Dual Wheel (Black) - 153-0001BK
- 3" Dual Wheel (Gray) - 153-0001
- 2" Single Wheel - 153-0002



FLEX Whisker Upgrade
164-8826 - KW | FXW

Lid & Component Assemblies



Middle Slide Latch
154-0005



Flush Mount Lid Latch
(Without Lock) - 153-2232A



Straight Quarter turn Lid Latch
(With Slot) - 154-0804



Spring Plunger
164-2069 - IKN | FW16,17 | FX16,17



Push Latch with Key
154-0881



Flush Mount Lid Latch
(With Lock) - 153-2232L



Flange Quarter turn Lid Latch
154-0805



Lid Pin - 164-2002



Rubber Bumper
154-0006A



Foam (Sold by the Inch)
153-0036



FLEX Lid Track Shim
164-6170



FLEX Lid Track
Left Track 164-6119
Right Track 164-6118
FLX13,14,15 | FXW13,14,15
Left Track 164-6119A
Right Track 164-6118A
FLX16 and later
FXW16 and later

Motors & Speed Controls

Sanction Technology™

COMPONENTS	IKN	FLX	FXW	KW-C,D ION-C,D	KW-A,B ION-A,B	KK KP	STD SE ELT EP	PXS-C STD AC
Buffer Motor (115V AC)	N/A	N/A	N/A	N/A	N/A	154-8616A	154-8616B	154-8616A
Buffer Motor (230V AC)	N/A	N/A	N/A	N/A	N/A	154-8616E	154-8616E	154-8616E
Buffer Motor (24V DC) - Standard	158-8414	158-8414	158-8414	158-8414	158-8414	N/A	N/A	N/A
Buffer Motor (24V DC) - Variable Speed Upgrade	N/A	164-8014	164-8014	N/A	N/A	N/A	N/A	N/A
Buffer Motor Brushes (24V DC)	158-1406B	158-1406B	158-1406B	158-1406B	158-1406B	N/A	N/A	N/A
Buffer Motor Contactor (115V AC)	N/A	N/A	N/A	N/A	N/A	153-1004A	153-1004A	153-1004A
Buffer Motor Contactor (230V AC)	N/A	N/A	N/A	N/A	N/A	153-1604A	153-1604A	153-1604A
Conditioner Pump Motor (115V AC)	N/A	N/A	N/A	N/A	N/A	154-8604	154-8604	154-8604
Conditioner Pump Motor (230V AC)	N/A	N/A	N/A	N/A	N/A	154-8604E	154-8604E	154-8604E
Conditioner Pump Motor (24V DC)	158-8401A	158-8632	158-8632	158-8632	158-8401A	N/A	N/A	N/A
Conditioner Pump Motor Brushes (24V DC) BISON	N/A	N/A	N/A	N/A	158-1422B	N/A	N/A	N/A
Conditioner Pump Motor Brushes (24V DC) GROSCHOFF	158-1422G	N/A	N/A	N/A	158-1422G	N/A	N/A	N/A
Drive Motor (90V DC)	N/A	N/A	N/A	N/A	N/A	154-8865	153-8065 - STD	153-8065 - STD
Drive Motor (90V DC)	N/A	N/A	N/A	N/A	N/A	N/A	154-8365 - ELT EP	154-8365 - PXS-C
Drive Motor (24V DC)	158-8406	N/A	N/A	N/A	158-8406 - ION	N/A	N/A	N/A
Drive Motor (24V DC) Long Shaft	N/A	158-8602	158-8602 ZTR FW16,17	158-8602	158-8602 - KW	N/A	N/A	N/A
Main Drive Motor (24V DC)	N/A	164-8217 FX16,17,18	164-8217M FW16,17,18	N/A	N/A	N/A	N/A	N/A
Duster Motor (115V AC)	N/A	N/A	N/A	N/A	N/A	153-8403	153-8403	153-8403
Duster Motor (230V AC)	N/A	N/A	N/A	N/A	N/A	153-8803H	153-8803H	153-8803H
Duster Motor (24V DC)	158-8403	158-8403	158-8403	158-8403	158-8403	N/A	N/A	N/A
Head Drive Motor (115V AC)	N/A	N/A	N/A	N/A	N/A	154-8232	154-8232	154-8232
Head Drive Motor (230V AC)	N/A	N/A	N/A	N/A	N/A	154-8632	154-8632	154-8632
Head Drive Motor (24V DC)	158-8405	164-8032	164-8032	158-8632	158-8405	N/A	N/A	N/A
Head Drive Motor Brushes (24V DC)	158-1404B	N/A	N/A	N/A	158-1404B	N/A	N/A	N/A
Squeegee & Brush Lift Motor (115V AC)	N/A	N/A	N/A	N/A	N/A	153-8207	153-8207	153-8207
Squeegee & Brush Lift Motor (230V AC)	N/A	N/A	N/A	N/A	N/A	153-8807H	153-8807H	153-8807H
Squeegee & Brush Lift Motor (24V DC)	158-8402	158-8402	158-8402	158-8402	158-8402	N/A	N/A	N/A
Vacuum Motor (115V AC)	N/A	N/A	N/A	N/A	N/A	154-8805	154-8805	154-8805
Vacuum Motor Brushes (115V AC Pair)	N/A	N/A	N/A	N/A	N/A	153-0204B	153-0204B	153-0204B
Vacuum Motor (230V AC)	N/A	N/A	N/A	N/A	N/A	154-8805E	154-8805E	154-8805E
Vacuum Motor Brushes (230V AC Pair)	N/A	N/A	N/A	N/A	N/A	153-0204C	153-0204C	153-0204C
Vacuum Motor (24V DC)	158-8407	158-8407	158-8407	158-8407	158-8407	N/A	N/A	N/A
Vacuum Brushes (24V DC Pair)	158-1421B	158-1421B	158-1421B	158-1421B	158-1421B	N/A	N/A	N/A

* Not used on Kustodian PLUS or Elite PLUS

COMPONENTS	IKN	FLX	FXW	KW-C,D ION-C,D	KW-A,B ION-A,B	KK KP	STD SE ELT EP	PXS-C STD AC
Circuit Board w/Speed Relays (115V AC)	N/A	N/A	N/A	N/A	N/A	154-8810	N/A	154-8312
Circuit Board w/Speed Relays (230V AC)	N/A	N/A	N/A	N/A	N/A	154-8811	N/A	154-8644
Circuit Board w/Speed Relays (24V DC)	N/A	N/A	N/A	N/A	158-8409	N/A	N/A	N/A
Isolator Analog Card 115V AC Drive Assembly	N/A	N/A	N/A	N/A	N/A	N/A	154-8633	N/A
Isolator Analog Card 230V AC Drive Assembly	N/A	N/A	N/A	N/A	N/A	N/A	154-8634	N/A
Isolator Analog Card 115V AC Buffer Assembly	N/A	N/A	N/A	N/A	N/A	N/A	154-8635	N/A
Isolator Analog Card 230V AC Buffer Assembly	N/A	N/A	N/A	N/A	N/A	N/A	154-8636	N/A
Isolator Analog Card Only	N/A	N/A	N/A	N/A	N/A	N/A	154-1413	N/A
Speed Control Assembly (24V DC-Buffer)	N/A	164-8225 FX16,17,18	164-8225 FW16,17,18	N/A	N/A	N/A	N/A	N/A
Speed Control Assembly (24V DC-Drive)	164-8807	164-8828	164-8828	164-8828	158-8412	N/A	N/A	N/A
Speed Control Assembly (24V DC-Cleaner Pump)	164-8806	158-8415 164-8221 FX16,17,18	158-8415 164-8221 FW16,17,18	158-8415	158-8415	154-8848 KP	N/A	N/A
Speed Control Assembly (Oil/Cleaner Head)	N/A	158-1605	158-1605	158-1605	N/A	N/A	N/A	N/A
Speed Control Board Only (115V AC)	N/A	N/A	N/A	N/A	N/A	153-1012	153-1012	153-1012
Speed Control Board Only (230V AC)	N/A	N/A	N/A	N/A	N/A	153-1812	153-1812	153-1812
Speed Control Board Only (24V DC)	N/A	164-1242A	164-1242A	164-1242A	158-1410	N/A	N/A	N/A



Where do you want to howl today?

KEGEL
LANDMARK PATTERNS

Visit www.kegel.net for more information.

Motors & Speed Controls

Wick-Pad Technology

COMPONENTS	XF	PX-C
Buffer Motor (115V AC)	154-8616A	154-8616A
Buffer Motor (230V AC)	154-8616E	154-8616E
Buffer Motor Contactor (115V AC)	153-1004A	153-1004A
Buffer Motor Contactor (230V AC)	153-1604A	153-1604A
Drive Motor (90V DC)	154-8865	154-8865
Duster Motor (115V AC)	153-8403	153-8403
Duster Motor (230V AC)	153-8803 H	153-8803H
Squeegee & Brush Lift Motor (115V AC)	153-8207	153-8207
Squeegee & Brush Lift Motor (230V AC)	153-8807	153-8807H
Transfer Roller Motor (115V AC)	153-8828	154-8332
Transfer Roller Motor (230V AC)	153-8829	154-8332E
Vacuum Motor (115V AC)	158-8208	154-8805
Vacuum Motor Brushes (115V AC Pair)	153-0204B	153-0204B
Vacuum Motor (230V AC)	158-8208E	154-8805E
Vacuum Motor Brushes (230V AC Pair)	153-0204C	153-0204C
Circuit Board w/Speed Relays (115V AC)	N/A	154-8330
Circuit Board w/Speed Relays (230V AC)	N/A	154-8331
Speed Control Assembly (115/230V AC 3-Speed)	158-8211	N/A
Speed Control Board Only (115V AC)	158-1212R	153-1012
Speed Control Board Only (230V AC)	158-1212R	153-1812

For Dayton® Drive Motor - 153-8065

Rear Seal - 153-1057R

Front Seal (Shaft Side) - 153-1057S

Gasket - 153-1057F

Drive Motor Brushes (90V DC Pair) - 153-1057H

For ALL Baldor® Drive Motors

Rear Seal - 154-1809D

Front Seal (Shaft Side) - 154-1809E

Drive Motor Brushes (24V DC Pair) - 158-1405B

Drive Motor Brushes (90V DC Pair) - 154-1809B

Fittings

Look for our new complete hose and elbow kits on page 17



Elbow
1/4" Tube x 1/4" Tube - 154-0243



Elbow
3/8" x 3/8" - 154-0256



Elbow
3/8" NPT x 1/4" Tube - 154-0412
3/8" NPT x 3/8" Tube - 154-0803



Elbow
3/8" Tube x 1/4" NPT - 154-0225
1/4" Tube x 1/4" NPT - 154-0223



Elbow
1/4" Stem x 1/4" Hose Barb
154-0226



Elbow
1/4" Stem to 5/16" Hose Barb
154-0227



Elbow
3/8" Stem to 5/16" Hose Barb
154-0239



Elbow
3/8" Stem x 3/8" Tube - 154-0258
3/8" Stem x 1/4" Tube - 158-1214



Elbow
1/4" Stem x 1/4" Tube
154-0222



Elbow
1/8" NPT x 3/16" Tube
154-0613



Reducing Union
1/4" x 3/16" - 154-0248
3/8" to 1/4" - 154-0244



Bulkhead Union
3/8" x 3/8" - 154-0285
1/4" x 1/4" - 154-0221



Union
1/4" x 1/4" - 154-0241



Union Tee
1/4" Tube - 153-0815



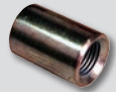
Male Connector
1/4" Tube x 1/8" NPT - 154-0224
1/4" Tube x 1/4" NPTF - 154-0224
3/8" Tube x 1/4" NPT - 154-0224



Female Connector
1/4" Tube x 1/8" FPT - 154-0257



Union Tee
3/8" Tube - 154-0815



In-line Coupler
1/8" - 154-0230



Stem Adapter
1/4" NPT x 1/4" Stem
154-0243S



Male Connector
1/2" Tube x 1/2" NPT (Drilled)
154-0232D



Tank Plug
1/4" - 154-0245
3/8" - 153-1054
1/2" - 154-0231



O-Ring for Fitting
1/4" - 154-0287A
3/8" - 154-0287B
1/2" - 154-0287C



Male Luer
1/8" Hose Barb - 154-0863



Cleaner Tip with Check Valve
164-0012M

PRODUCTS & PARTS 2018-19



www.kegel.net

Toll Free (US Only):

800 - 280 - BOWL (2695)

Fax: 863 - 734 - 0204

International: 863 - 734 - 0200

1951 Longleaf Boulevard
Lake Wales, FL 33859 USA