

GS[®]

REPLACEMENT PARTS



GS[®] is a registered trademark of Brunswick Bowling Products, LLC

'Only the best parts have a 100% money back guarantee!'


BOWLTECH[®]



HUNDRED PERCENT MONEY BACK GUARANTEE

IF YOU ARE NOT A 100% SATISFIED, WE ARE NEITHER.

CONTENTS

Section	Category	Page
S 1	Elevator Parts	3
S 2	Transport Band	7
S 3	Ball Cushion & Pit Curtain	11
S 4	Accelerator	15
S 5	Sweep Wagon	19
S 6	Setting Table	21
S 7	Drive Frame Assemblies	31
S 8	Distributor	37
S 9	Power Lift	43
S10	Ball Return & Rack	45
S11	Other Rep. Parts	47
S12	Kegel Rep. Parts 	51

Since the introduction of our new product line GS[®] replacement parts, we now have enlarged our stock with another 50 high quality GS[®] replacement parts, essential to your pinsetters. We can offer these parts again at the industry's best pricing.

With virtually no customer complaints and zero refunds we continue to give a 100% money back guarantee, when a customer for whatever reason is not satisfied with the purchased parts. If the product(s) is returned within 30 days, a full refund will be made.

GS[®] as used throughout this catalog is a registered trademark of Brunswick Bowling Products, LLC and is in no way associated with Bowltech International. GS-10, GS-92, GS-96, GS-98 and GS -X are protected brands by Brunswick Bowling.



S1

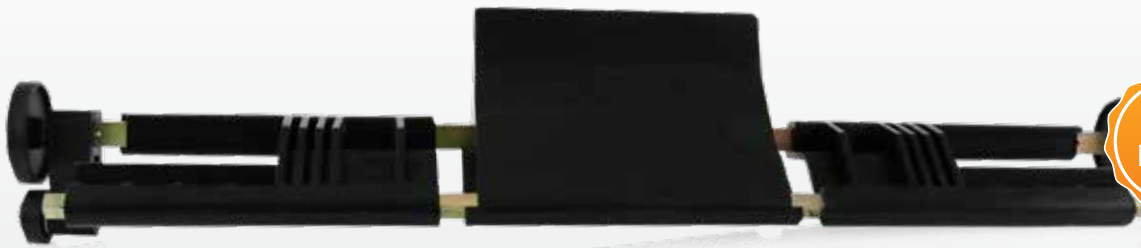
**ELEVATOR
REPLACEMENT
PARTS**

GS® replacement parts



S1 Pin shovel only
(elevator)

GS47011049001



S1 Pin shovel assembly
(complete)

GS47013532009



S1 Spacer

GS47011053004



S1 Chain gear

GS47011053004



S1 Ejector

GS47014060003



S1 Master link w/pin

GS47013871004



S1 Shovel Guide

GS47014017003



S1 Slide band
GS47013912004



S1 R.H. front pin deflector
GS47013991001



S1 Hairpin
(3 mm x 62 mm)
GS11054301001



S1 L.H. front pin deflector
GS47013992001



S1 Bushing
GS47012273004



S1 R.H. rear pin deflector
GS47013993001



S1 Well nut 8 mm
GS11135400000



S1 L.H. rear pin deflector
GS47013994001

GS® replacement parts



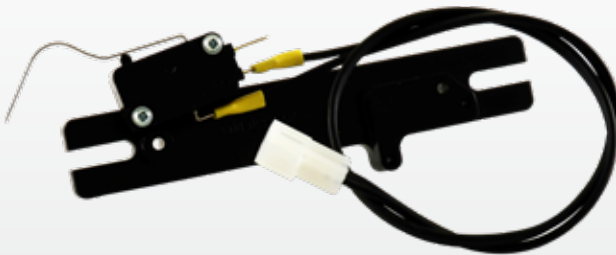
S1 Switch assembly
(silver box)

GS47243027004



S1 Micro switch only

GS47014918003



S1 Switch (silver box)

GS47243026004



S1 V-Belt pulley

GS47013956003



S1 Round belt pulley

GS47022410003



S1 V-Belt pulley adapter

GS47014054003



S1 Wedge guide

GS47013951003



S1 Rubber Bumper

GS47014800004



S1 V-Belt
10 x 6 x 1900 mm

GS11053905000



S2

**TRANSPORT
BAND
REPLACEMENT
PARTS**

GS® replacement parts



S2 Bearing block repair kit
GS47274332002



S2 Threaded rod
GS47024093004



S2 Bearing
GS47024094003



S2 End cap with bearing
GS47020908003



S2 Compression spring
GS47024309004



S2 LH T-band frame assembly
GS47024736009



S2 RH T-band frame assembly
GS47024735009



S2 V-Belt 10 x 6 x 2650 mm
GS11053910000



S2 V-Belt 10 x 6 x 925 mm
GS11053907000



S2 V-Belt 10 x 6 x 2560 mm
GS11053909000



S2 V-belt pulley
GS47013956003



S2 Drive pulley assembly
GS47092415003



S2 Flange
GS47094326004



S2 Well nut 8 mm
GS11135400000



S2 Round Belt Pulley
GS47093863003



S2 Shaft
GS47023998004



S2 V-belt pulley - 110 mm (T-band)
GS47024330004



S2 V-Belt pulley
GS47024004003



S2 Poly cord belt 15 mm x 7 mtr
GS47024838005



GS® CARPET SHORT PIT

- Easy installation
- Resistant to cleaners and conditioners
- Form-retaining, does not stretch
- Extremely durable



HIGH QUALITY CARPET BELT

This transport band, also called 'Carpet Belt' is made from high-quality materials which makes it extremely durable. The transport band is composed of 4 layers ensuring absolute durability and is maintenance-free.

[GS11635201100](#)



S3

**BALL CUSHION
& PIT CURTAIN
REPLACEMENT
PARTS**

GS® replacement parts



S3 Rubber Mount
(8 mm thread)
GS11053582000



S3 Rubber Mount
GS11053585000



S3 Pin wipe
GS47092527000



S3 Mount - Motor mount
(metric)
GS11053578000



S3 Rubber mount
(6 mm thread)
GS11053575000



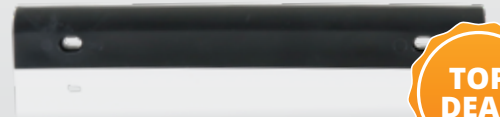
S3 Overflow chute clamp
GS11603301000



S3 Round belt pulley
GS47022410003



S3 Cap (Ball cushion ass.)
GS47023660004



S3 Black impact strip
GS47021010003



S3 Bearing Block
GS47020947003



S3 Hydraulic ball cushion
GS99026121000



GS®-SERIES BLACK



GS®-SERIES BLACK

OVERFLOW SOCK WIDE

- Improved design
- Reinforced bottom

The reinforced bottom reduces wear and slows the pin down when falling on the transportband. This design has a mounting ring to secure the overflow sock and prevent it from excessively swinging.

[GS47022531000-O](#)

Overflow sock Classic

[GS47022531000](#)



NEW!

BALL CUSHION FRAME

- Heavy duty Ball Cushion Frame
- Including brackets
- For use on all GS® machines

This Ball Cushion Frame is made from High Quality first class steel. The construction is reinforced on parts where necessary.

GS47025639009



NEW!

S3 Pit Curtain GS

GS47021084004



S4

**ACCELERATOR
REPLACEMENT
PARTS**

GS® replacement parts



S4 Protector wedge righthand
GS47021619002



S4 Protector wedge lefthand
GS47021620002



S4 Lower protector wedge
GS47021618002



S4 Accelerator flat belt
GS10635127000



S4 Solenoid black 14/47 Molex
GS99070356004



S4 Pivoting lever
GS47031454002



S4 Solenoid only Black
GS99070356004-O



S4 Accelerator motor
GS99030363004



S4 V-Belt
10 x 6 x 950 mm Z38
GS11053904000



S4 R.H Button
GS47031055003



S4 L.H. Button
GS47031056003



S4 Ball door
GS47031054002



S4 Lever -Ball door stop
GS47031822004



S4 Locking bolt
GS47031797002



S4 Hydraulic Sweep
GS99046122000



S4 Accelerator/distribution
motor 1/2 H.P 230V
GS99040113002



S4 Motor mounting bracket
GS47031603003



S4 Shaft (ball door)
GS47031091004



S4 L.H. locking mechanism
 GS47033557009
 R.H. lock. mech. (not shown)
 47033558009



S4 Hairpin (3 mm x 62 mm)
 GS11054301001



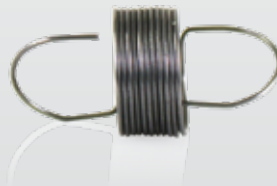
S4 Eject-plastic nuts 3.5
 GS11055800000



S4 Terminal .62
 Male
 GS11680302000



S4 Tension spring ball door
 GS47030091004



S4 Tension spring (ball door)
 GS47034767004



S4 Terminal .62
 Female
 GS11680301000



S4 Driving drum
 complete rear
 GS47035064099



S4 Front driving drum
 assembly
 GS47035232002



S4 Solenoid assembly
 (red box machines only)
 GS99060219004



\$5

**SWEEP
WAGON
REPLACEMENT
PARTS**

GS® replacement parts



S5 Connector joint
GS99040151004



S5 Switch assembly
(silver box)
GS47243027004



S5 Solenoid black
14/47 Molex
GS99070356004



S5 Hydraulic Sweep
GS99046122000



S5 Tipper
GS47041783003



S5 Gutter Adapter
GS47041721002



S5 Rubber bumper
GS47044979004



S5 Wagon Wheel
GS99040249004



S5 Solenoid assembly
(red box machines only)
GS99060219004



S6

**SETTING
TABLE
REPLACEMENT
PARTS**

PIN HOLDER ASSEMBLY COMPLETE

The pinholder is available in several versions; the 'Pin Holder Assembly Complete' is already fully assembled which makes it very easy to replace.

GS47055314009



S6 Toothed rack complete
GS47053513009

S6 Geared rack setting table
GS47051635001



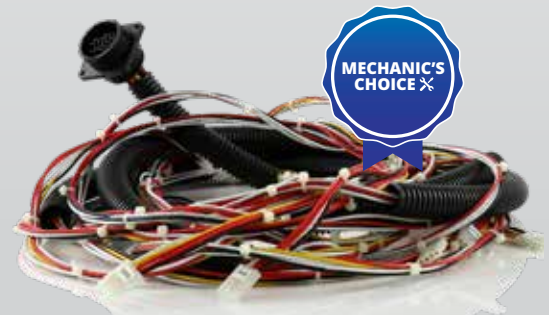
S6 Switch assembly (silver box)
GS47243027004



S6 Square shaft gear
GS47071615004

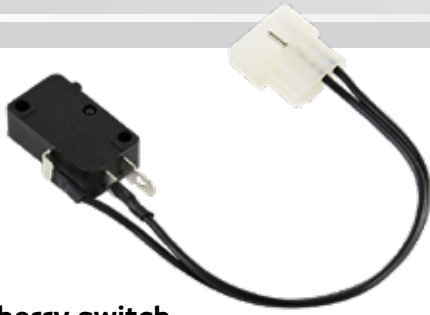


S6 Latch
GS47051674004



S6 Setting table harness
GS47245164001





S6 Cherry switch
Silver box
GS47053635004



S6 Spotting tong assembly
(2,3,7,8,9,10)
GS47055118009



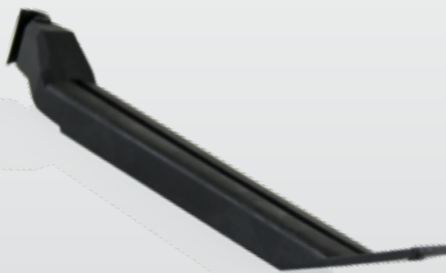
S6 Microswitch
double
GS47054700004



S6 Spotting tong assembly
(1,4,5,6)
GS47055117009



S6 Tong left hand
GS47055148002



S6 Tong right hand
GS47054896002



S6 Deck plate for GSX tong
GS47054902002



S6 Pin deflector plate
GS47054298001



S6 Pivot pin (each)
GS47860005000

GS® replacement parts



S6 Connecting link
(SP TNG assembly)
GS47051762004



S6 Toothed rack
(6 mmx 25 mm)
GS47050365003



S6 Switch spring
GS47050639004



S6 T - Stop
GS47071871003



S6 Torsion spring
GS47050640004



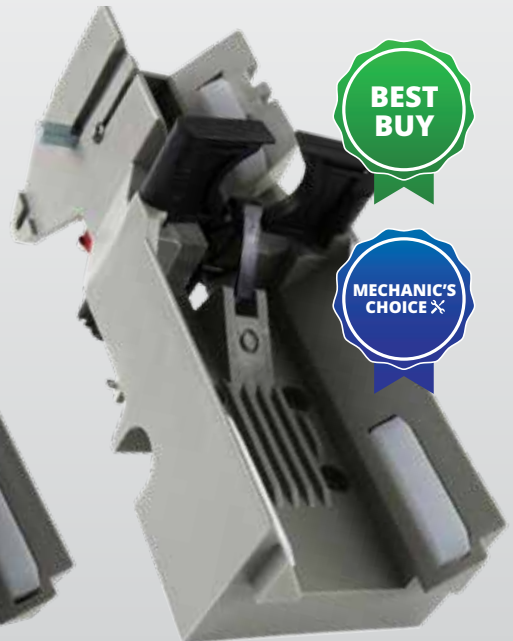
S6 Microswitch only
GS47054700004-A



S6 PKG urethane damper
(10/PKG)
GS47051758600



S6 Pin holder with dampers
GS47054689009



S6 Pin holder
Double switch
GS47054699009



S6 Terminal .62 Female
GS11680301000



S6 Gear
GS47054984004



S6 Threaded cap
GS47070401004



S6 Terminal .62 Male
GS11680302000



S6 Chain gear
GS47011053004



S6 Lower chain gear w/bearing block
GS47075553003



UNIQUE PART!



S6 Solenoid silver box only
GS99060242004-O



S6 Motor - Table
230/380V grey 0.37KW
GS99040116002

GS® replacement parts



S6 GSX Grip ring
GS47054986004



S6 Pin
GS47054997003



S6 GSX Solenoid plunger
GS47055004004



S6 Wedge (large)
GS47055320003



S6 Wedge (small)
GS47055319003



S6 GSX Switch button
GS47054988003



S6 Pin holder assembly complete
GS47055314009



S6 GSX Pin holder with dampers
GS47054980201



S6 GSX Solenoid complete
GS99060351004



S6 Deck plate (spot tong assembly)
GS47051756004



S6 'A' Position spotting tong
GS47051757003



S6 O-Ring for plunger
GS99090349004



S6 Spotting tong
GS47053782003



S6 GSX Drive
GS47054983002



S6 Connecting Link
GS47050266004



S6 Link assembly Setting Table (GSX)
GS47055002002



S6 GSX Solenoid only
GS99060351004-O



S6 GSX Clip
GS47055001004



S6 GSX Switch part
GS47054985001

GS® replacement parts



S6 Tension spring
(pin holder assembly)
GS46050302004



S6 Tension spring (table)
GS47052240004



S6 Dampers only (Pin holder)
GS47050308004



S6 Pin Gripper GSX pin holder
GS47054981002



S6 Pin Gripper LH
GS47052439004



S6 Pin Gripper RH
GS47052440004



S6 Holder
GS47051634004



S6 GSX pin holder
w/damper
GS47054980201



S6 Cherry switch
only
GS47053635004-A



S6 Cherry switch
(Red box machines only)
GS47052418004



S6 V-Belt 10 x 6 x 2500 mm
GS11053906000



S6 Solenoid spring
(GSX pin holder)
GS47054987004



S6 GSX micro switch only
GS47055323000



S6 GSX Switch finger
GS47054982002



S6 GSX micro switch
GS47055323004



S6 Chain gear
GS47075474004



S6 Tube guide
GS47085349003



S6 Gear
GS47051616004



S6 Spotting Tong Pivot LH
GS47054897003



S6 Spotting Tong Pivot RH
GS47054898003

GS® replacement parts



S6 GSX Torsion Spring
GS47055006004



S6 Tension spring GSX Pin holder
GS47055005004



S6 GSX Tension Spring
GS47055008004



S6 Lever
GS47054992002



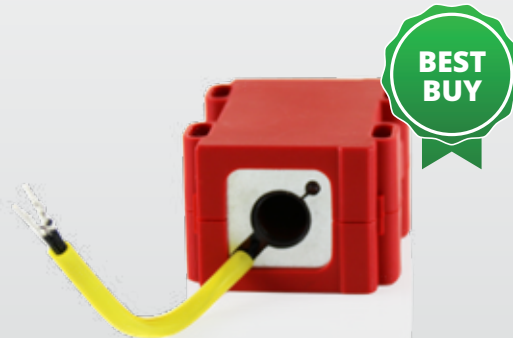
S6 Lever
GS47054990001



S6 Bearing Tabel
GS99010124004



S6 Lever
GS47054992001



S6 Solenoid silver box assembly
GS99060242004



S6 Lever
GS47054993001



S6 Lever
GS47054991001



S6 Lever
GS47054989001



S7

**DRIVE FRAME
ASSEMBLIES
REPLACEMENT
PARTS**

MOTOR - TABLE

230 /380 V GREY 0.37 KW

- Extremely durable
- Value for money
- Low Maintenance



MOTOR - TABLE

This high quality, heavy duty table motor has a very high brake torque and is low on maintenance. A real 'value for money'-table motor.

GS99040116002





S7 Hairpin (3 mm X 62 mm)
GS11054301001



S7 Tension spring
GS47052120004



S7 Pinion shaft
GS47071705004



S7 Motor drive pulley
Dual sheave
GS47073866004



S7 Double pulley
GS47070990003



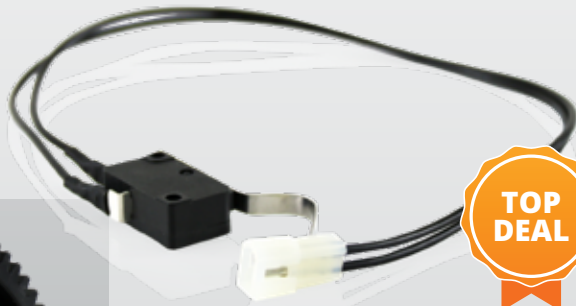
S7 Rubber bumper
GS99070398004



S7 Gear assembly w/hub
GS47071702003



S7 Gear only
GS47075072002



S7 Switch assembly
(silver box)
GS47243028004



S7 Solenoid black
14/47 molex
GS99070356004



GS® replacement parts



S7 Sweep stop motor
(0.18 KW)
GS99040241004



S7 V-Belt
10 x 6 x 875 mm Z35
GS11053901000



S7 Metal pinion gear
GS47071449609

**IMPROVED
ABSORBER**



S7 Hydraulic shock absorber
setting table
GS99076120000

S7 Hydraulic shock absorber
GS99076123000



S7 Solenoid only
GS99060387004-O



S7 Solenoid assembly
(red box machines only)
GS99060219004



S7 V-Belt
13 x 8 x 1375 mm
GS11053903000



S7 V-Belt
10 x 6 x 1160 mm Z46
GS11053902000



S7 Sprocket shaft
GS47071823004



S7 Square shaft drive gear
GS47071881004



S7 Connecting link
5/8 x 3/8
GS11600501000



S7 Switch assembly
(silver box)
GS47243027004



S7 Spindle gear
GS47071880003



S6 Chain gear
GS47075474004



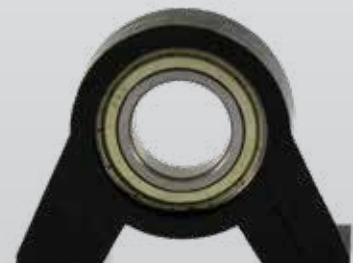
S7 Reed switch
GS47072307004



S7 Square shaft gear
GS47071615004



S6 Tube guide
GS47085349003



S7 Bearing block
GS47071578004

GS® replacement parts



S7 Cam
GS47071879003



S7 Switch (silver box)
GS47243026004



S7 Clevice
GS47071343004



S7 Crank
GS47075356003



S7 Chain gear
GS47011053004



S7 Crank arm
GS47075357003



S7 5/8" Chain - 51 links
and 2 connection links
GS47075488004



S7 Reed switch assembly
silver box
GS47243029004



S7 Latch
GS47051674004



S8

**DISTRIBUTOR
REPLACEMENT
PARTS**

GS® replacement parts



S8 V-Belt
13 x 8 x 1375 mm
GS11053903000



S8 Rubber mount
GS11053579000



S8 Fin Switch
Complete
GS47094095002



**UNIQUE
PART!**

S8 Solenoid silver box
only
GS99060242004-0



S8 Spur gear
position 1 & 2
GS47090555003



S8 Spur gear
position 3
GS47093629003



**BEST
BUY**

S8 Solenoid silver box
assembly
GS99060242004



S8 L.H. Pin guide wedge
GS47093929001



S8 R.H. Pin guide wedge
GS47093906001



**TOP
DEAL**

S8 Two piece spur gear
GS47274669004



S8 Flange
GS47094326004

UNIVERSAL PIN STATION

- Extremely durable
- High-quality material
- Easy to replace

PIN STATION

These fully assembled universal pin stations are made from a high quality material with a strengthened steel pin to ensure extreme durability. Easy to replace.

Universal pin station (1,5,6)

GS47094793009

Universal pin station (2,3,4,8,9)

GS47094792009

Universal pin station (7,10)

GS47094794009

Housing

GS47094778001



Universal pin station
(1,5,6)



Universal pin station
(2,3,4,8,9)



Universal pin station
(7,10)



Housing



GS[®] replacement parts



S8 O-Ring for plunger
GS99090349004



S8 Ejector tension spring
GS47094791004



S8 Dowel pin (3 x 15mm)
GS47093587004



S8 Drive pulley assembly
GS47092415003



S8 Bearing shell
GS47094347003



S8 Spur gear w/bearing
GS47093547004



S8 Retaining pin
GS47094789003



S8 Torsion spring
(right hand)
GS47090577004



S8 Torsion spring
(left hand)
GS47090578004



S8 Front dist.
spur shaft gear 2-P
GS47275746009



S8 Release button
GS47094782003



S8 Polycord
13 mm (20 mtr)
GS47092300005



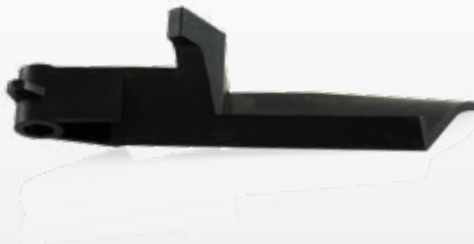
S8 Pin stop
GS47090969003



S8 Slider only (distributor)
GS47094224002



S8 Ejector flap
GS47094784002



S8 Ejector flap (left hand)
GS47094783002



S8 Spindle gear
GS47071880004



S8 Solenoid Complete
GS99060387004



S8 Slider assembly Complete
GS47091284002



S8 Bearing shell w/shoulder
GS47094346003



S8 Distributor pulley Repair kit
GS47275748009



S8 Slide (smart shark)
GS47095105003



S8 PKG-Extender sleeve retaining BOW(6)
GS47862931000

GS® replacement parts



S8 Square Shaft
GS47094790003



S8 Ball bearing (6003ZZ)
GS11430053000

S8 Bushing Square spindle
GS47095742004



S8 Release lever Universal
GS47095154009



S8 Spring GSX smart shark
GS99090348004



S8 Fin switch
GS47095106001



S8 Retaining BOW w/flap
GS47094779001



S8 Spur gear
GS47093900003



S8 Spur gear W/25 mm collar
GS47090547004



S8 Retaining BOW w/o flap
GS47094780001



S8 Round belt pulley
GS47093863003



S8 Rear distr. shaft drive pulley
GS47024839002



S9

**POWER
LIFT
REPLACEMENT
PARTS**

NEW SECTION!

GS® replacement parts



S9 Rubber track
BR53520686000



S9 Poly-V belt ball lift
BR53520235000



S9 Ball lift track
GS90520171000



S9 Pulley upper (ball lift)
GS53520658000



S9 Inner ring
BR53520421000



S9 Power lift drive shaft
GS53520066000



S9 Poly-V Idler assembly
BR53520244000



S9 Hub & tire power lift wheel
B53520060000



S9 Lower pulley assembly
GS53520663001



S9 Power lift wheel urethane
GS90520060000



\$10

**BALL RETURN
& RACK
REPLACEMENT
PARTS**

NEW SECTION!

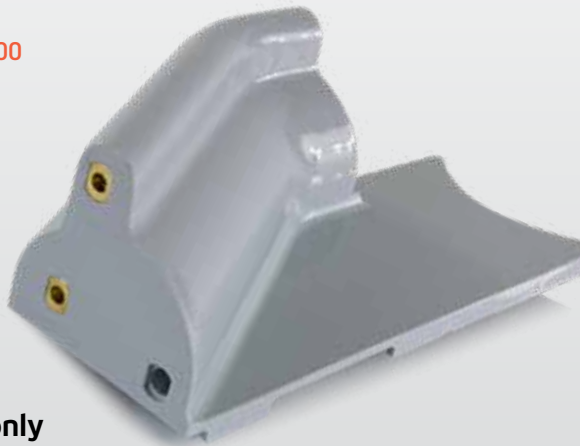
GS® replacement parts



S10 Ball return
end cap - top
GS53400027000



S10 Ball return end
cap - low
GS53400271000



S10 Exit Track only
RH LT gray
GS53400099000



S10 Exit Track LH LT gray
GS53400097000



S10 Reset switch LT grey
GS53861057000



S11

**OTHER
REPLACEMENT
PARTS**

GS® replacement parts



S11 Setting table cable
Nexgen
GS47245420004



S11 Consolidated cable 36 pin
molex -37 pin main
GS47244922004



S11 Ball detector
assembly
GS57214921000



S11 Ball detector assembly
(set of 2)
GS57214921000-SET



S11 Reversing contactor
GS11671011000



S11 Non-reversing contactor
DC 24V
GS11671513000



S11 Non-reversing contactor
DC 12V
GS11671514000



S11 Key switch assembly
GS47862503000



S11 PBW R.H. Vertical Support
BR84200454001



S11 PBW L.H. Vertical Support
BR84200454002



- S11** External ret ring
8 mm
GS11051854001
- 10 mm
GS11051855001
- 12 mm
GS11051851001
- 15 mm
GS11051858001
- 17 mm
GS11051852001
- 20 mm
GS11051853001
- 25 mm
GS11051862001



- S11** Retaining ring
12 x 1 mm
GS11053451000
- 15 x 1 mm
GS11053452001
- 16 x 1 mm
GS11053453001
- 17 x 1 mm
GS11053454001
- 20 x 1,2 mm
GS11053455001
- 25 x 1,2 mm
GS11053456001



- S11** PNHD mach screw
8 mm x 60 mm
GS11052402001



- S11** Key
(4 mm x 4 mm x 18 mm)
GS11053499000
- (4 mm x 4 mm x 20 mm)
GS11053500000
- (5 mm x 5 mm x 20 mm)
GS11053491000
- (5 mm x 5 mm x 25 mm)
GS11053501000
- (5 mm x 5 mm x 32 mm)
GS11053494000
- (8 mm x 7 mm x 32 mm)
GS11053497000
- (8 mm x 7 mm x 40 mm)
GS11053495000
- (8 mm x 7 mm x 45 mm)
GS11053493000
- (8 mm x 7 mm x 50 mm)
GS11053502000



- S11** Flat Washer 8.4 mm
GS11052003001



- S11** Speed nut
3 mm
GS11053475001
- 4 mm
GS11053476001
- 5 mm
GS11053481001
- 6 mm
GS11053482001
- 7 mm
GS11053477001
- 8 mm
GS11053478001
- 9 mm
GS11053479001
- 10 mm
GS11053480001



- S11** Metric key M10 x 32 mm
GS11053511000

S11 Belt cutter
GS47093876004



S11 Belt welding iron 220V
GS47094208004



S11 Belt welding clamp Pro
GS47862770001





S12

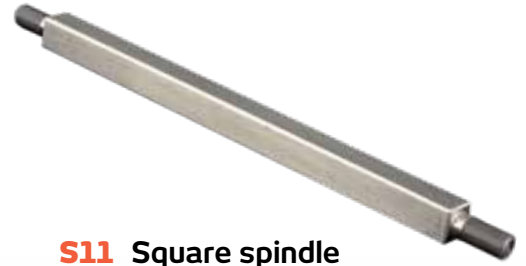
KEGEL REPLACEMENT PARTS



GS® replacement parts



S11 Impact strip
162-6125



S11 Square spindle with bushing
163-6003



S11 Retaining pin
163-6002



S11 Micro switch (replaces single GSX)
163-8003



S11 Sweep wagon wheel
162-6099



S11 Orange belt
12.7 mm x 20 mtr
163-9004



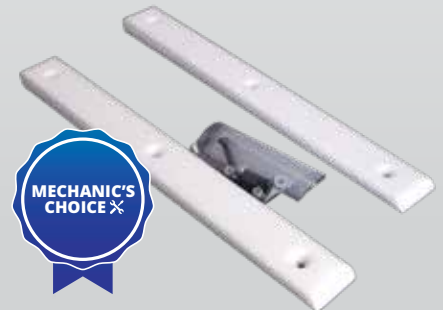
S11 Gutter Adapter
162-6124



S11 Red belt 12.5 mm x 20 mtr / 15 mm x 7 mtr (not shown)
163-9020R / 163-9007R



S11 Setting table harness (GSX only)
163-8000



S11 Shark transition cam
163-6008



S11 Pin detector plate (GSX only)
163-6001



S11 Crossover wedge
163-8011



S11 Pivot Bearing
162-6126



S11 Pivot pin
163-6004



S11 Power Lift Wheel
162-7001

**DEEP
PURPLE
URETHANE**



S11 Power Lift Track
162-6305



S11 Heavy duty overflow sock
163-6006



S11 Pin wipe
163-6022



S11 Underground-, trap door-, Accelerator ball wipe
163-6023 /-6024 /-6025

INDEX

With our large stock of GS[®] replacement parts in the Bowltech Central Warehouse in Made, we can assure fast delivery and competitive pricing to all of our customers!



8000 m² Bowltech central warehouse
Made, Netherlands

Partnumber	Page	Partnumber	Page	Partnumber	Page	Partnumber	Page
162-6099.....	52	GS11051851001.....	49	GS11053501000.....	49	GS46050302004.....	28
162-6124.....	52	GS11051852001.....	49	GS11053502000.....	49	GS47011049001.....	4
162-6125.....	52	GS11051853001.....	49	GS11053511000.....	49	GS47011053004.....	4,25,36
162-6126.....	53	GS11051854001.....	49	GS11053575000.....	12	GS47012273004.....	5
162-6305.....	53	GS11051855001.....	49	GS11053578000.....	12	GS47013532009.....	4
162-7001.....	53	GS11051858001.....	49	GS11053579000.....	38	GS47013871004.....	4
163-6001.....	53	GS11051862001.....	49	GS11053582000.....	12	GS47013912004.....	5
163-6002.....	52	GS11052003001.....	49	GS11053585000.....	12	GS47013951003.....	6
163-6003.....	52	GS11052402001.....	49	GS11053901000.....	34	GS47013956003.....	6,9
163-6004.....	53	GS11053451000.....	49	GS11053902000.....	35	GS47013991001.....	5
163-6006.....	53	GS11053452001.....	49	GS11053903000.....	35,38	GS47013992001.....	5
163-6008.....	52	GS11053453001.....	49	GS11053904000.....	17	GS47013993001.....	5
163-6022.....	53	GS11053454001.....	49	GS11053905000.....	6	GS47013994001.....	5
163-6023.....	53	GS11053455001.....	49	GS11053906000.....	29	GS47014017003.....	4
163-6024.....	53	GS11053456001.....	49	GS11053907000.....	9	GS47014054003.....	6
163-6025.....	53	GS11053475001.....	49	GS11053909000.....	9	GS47014060003.....	4
163-8000.....	52	GS11053476001.....	49	GS11053910000.....	9	GS47014800004.....	6
163-8003.....	52	GS11053477001.....	49	GS11054301001.....	5,18,33	GS47014918003.....	6
163-8011.....	53	GS11053478001.....	49	GS11055800000.....	18	GS47020908003.....	8
163-9004.....	52	GS11053479001.....	49	GS11135400000.....	5,9	GS47020947003.....	12
163-9007R.....	52	GS11053480001.....	49	GS11430053000.....	42	GS47021010003.....	12
163-9020R.....	52	GS11053481001.....	49	GS11600501000.....	35	GS47021084004.....	14
B53520060000.....	44	GS11053482001.....	49	GS11603301000.....	12	GS47021618002.....	16
BR53520235000.....	44	GS11053491000.....	49	GS11635201100.....	10	GS47021619002.....	16
BR53520244000.....	44	GS11053493000.....	49	GS11671011000.....	48	GS47021620002.....	16
BR53520421000.....	44	GS11053494000.....	49	GS11671513000.....	48	GS47022410003.....	6,12
BR53520686000.....	44	GS11053495000.....	49	GS11671514000.....	48	GS47022531000.....	13
BR84200454001.....	48	GS11053497000.....	49	GS11680301000.....	18	GS47022531000-O.....	13
BR84200454002.....	48	GS11053499000.....	49	GS11680301000.....	25	GS47023660004.....	12
GS10635127000.....	16	GS11053500000.....	49	GS11680302000.....	18,25	GS47023998004.....	9

Partnumber	Page	Partnumber	Page	Partnumber	Page	Partnumber	Page
GS47024004003.....	9	GS47054689009.....	24	GS47071880004.....	41	GS47243026004.....	6,36
GS47024093004.....	8	GS47054699009.....	24	GS47071881004.....	35	GS47243027004....	6,20,22,35
GS47024094003.....	8	GS47054700004.....	23	GS47072307004.....	35	GS47243028004.....	33
GS47024309004.....	8	GS47054700004-A.....	24	GS47073866004.....	33	GS47243029004.....	36
GS47024330004.....	9	GS47054896002.....	23	GS47075072002.....	33	GS47244922004.....	48
GS47024735009.....	8	GS47054897003.....	29	GS47075356003.....	36	GS47245164001.....	22
GS47024736009.....	8	GS47054898003.....	29	GS47075357003.....	36	GS47245420004.....	48
GS47024838005.....	9	GS47054902002.....	23	GS47075474004.....	29,35	GS47274332002.....	8
GS47024839002.....	42	GS47054980201.....	26,28	GS47075488004.....	36	GS47274669004.....	38
GS47025639009.....	14	GS47054981002.....	28	GS47075553003.....	25	GS47275746009.....	40
GS47030091004.....	18	GS47054982002.....	29	GS47085349003.....	29,35	GS47275748009.....	41
GS47031054002.....	17	GS47054983002.....	27	GS47090547004.....	42	GS47860005000.....	23
GS47031055003.....	17	GS47054984004.....	25	GS47090555003.....	38	GS47862503000.....	48
GS47031056003.....	17	GS47054985001.....	27	GS47090577004.....	40	GS47862770001.....	50
GS47031091004.....	17	GS47054986004.....	26	GS47090578004.....	40	GS47862931000.....	41
GS47031454002.....	16	GS47054987004.....	29	GS47090969003.....	41	GS53400027000.....	46
GS47031603003.....	17	GS47054988003.....	26	GS47091284002.....	41	GS53400097000.....	46
GS47031797002.....	17	GS47054989001.....	30	GS47092300005.....	41	GS53400099000.....	46
GS47031822004.....	17	GS47054990001.....	30	GS47092415003.....	9,40	GS53400271000.....	46
GS47033557009.....	18	GS47054991001.....	30	GS47092527000.....	12	GS53520066000.....	44
GS47033558009.....	18	GS47054992001.....	30	GS47093547004.....	40	GS53520658000.....	44
GS47034767004.....	18	GS47054992002.....	30	GS47093587004.....	40	GS53520663001.....	44
GS47035064099.....	18	GS47054993001.....	30	GS47093629003.....	38	GS53861057000.....	46
GS47035232002.....	18	GS47054997003.....	26	GS47093863003.....	9,42	GS57214921000.....	48
GS47041721002.....	20	GS47055001004.....	27	GS47093876004.....	50	GS57214921000-SET.....	48
GS47041783003.....	20	GS47055002002.....	27	GS47093900003.....	42	GS90520060000.....	44
GS47044979004.....	20	GS47055004004.....	26	GS47093906001.....	38	GS90520171000.....	44
GS47050266004.....	27	GS47055005004.....	30	GS47093929001.....	38	GS99010124004.....	30
GS47050308004.....	28	GS47055006004.....	30	GS47094095002.....	38	GS99026121000.....	12
GS47050365003.....	24	GS47055008004.....	30	GS47094208004.....	50	GS99030363004.....	16
GS47050639004.....	24	GS47055117009.....	23	GS47094224002.....	41	GS99040113002.....	17
GS47050640004.....	24	GS47055118009.....	23	GS47094326004.....	9,38	GS99040116002.....	25,32
GS47051616004.....	29	GS47055148002.....	23	GS47094346003.....	41	GS99040151004.....	20
GS47051634004.....	28	GS47055314009.....	22,26	GS47094347003.....	40	GS99040241004.....	34
GS47051635001.....	22	GS47055319003.....	26	GS47094778001.....	39	GS99040249004.....	20
GS47051674004.....	22,36	GS47055320003.....	26	GS47094779001.....	42	GS99046122000.....	17,20
GS47051756004.....	26	GS47055323000.....	29	GS47094780001.....	42	GS99060219004.....	18,20,34
GS47051757003.....	27	GS47055323004.....	29	GS47094782003.....	40	GS99060242004.....	30,38
GS47051758600.....	24	GS47070401004.....	25	GS47094783002.....	41	GS99060242004-O.....	25,38
GS47051762004.....	24	GS47070990003.....	33	GS47094784002.....	41	GS99060351004.....	26
GS47052120004.....	33	GS47071343004.....	36	GS47094789003.....	40	GS99060351004-O.....	27
GS47052240004.....	28	GS47071449609.....	34	GS47094790003.....	42	GS99060387004.....	41
GS47052418004.....	28	GS47071578004.....	35	GS47094791004.....	40	GS99060387004-O.....	34
GS47052439004.....	28	GS47071615004.....	22,35	GS47094792009.....	39	GS99070356004.....	16,20,33
GS47052440004.....	28	GS47071702003.....	33	GS47094793009.....	39	GS99070356004-O.....	16
GS47053513009.....	22	GS47071705004.....	33	GS47094794009.....	39	GS99070398004.....	33
GS47053635004.....	23	GS47071823004.....	35	GS47095105003.....	41	GS99076120000.....	34
GS47053635004-A.....	28	GS47071871003.....	24	GS47095106001.....	42	GS99076123000.....	34
GS47053782003.....	27	GS47071879003.....	36	GS47095154009.....	42	GS99090348004.....	42
GS47054298001.....	23	GS47071880003.....	35	GS47095742004.....	42	GS99090349004.....	27,40

BOWLTECH®

BOWLTECH NETHERLANDS (HO)

Brieltjenspolder 42
4921 PJ Made
Netherlands
Tel. +31 (0) 162-682000
info@bowltech.nl

BOWLTECH BELGIUM

Kruisboommolenstraat 7A/11
8800 Roeselare
België
Tel. +32 (0) 51-490590
info@bowltech.be

BOWLTECH DEUTSCHLAND GMBH

Wilhelm-Röntgen-Str. 27
52499 Baesweiler
Germany
Tel.: +49 (0)2401 91 94 - 0
info@bowltech.de

BOWLTECH UK LTD

5 Spectrum Estate, Bircholt Rd
Parkwood Maidstone, Kent
United Kingdom
Tel: 01622 683628
info@bowltech.co.uk

BOWLTECH FRANCE SARL

12, Rue Pernelle
F-75004 Paris
France
Tel. +33 (0) 621 69 34 51
patrick@bowltech.fr

BOWLTECH SWEDEN AB

Viaaredsvägen 4B
SE-504 64 Borås
Sweden
Tel.: +46 (0)33-24 19 10
info@bowltech.se

BOWLTECH DANMARK A/S

Vissingsgade 13A, 1
7100 Vejle
Danmark
Tel. +45 76 30 11 99
info@bowltech.dk

BOWLTECH NORWAY AS

Bregneveien 4
2007 Keller
Norway
Tel.: +47 6380 1910
info@bowltech.no

GS® as used throughout this catalog is a registered trademark of Brunswick Bowling Products, LLC and is in no way associated with Bowltech International. GS-10, GS-92, GS-96, GS-98 and GS -X are protected brands by Brunswick Bowling.



With our extensive Bowltech webshop in five different countries, ordering your GS® replacement parts is just one click away. We guarantee your order will be ready for shipment within 24 hours.

**All your parts one click away...
order now!**

