

REPLACEMENT PARTS

FOR

GS[®] MACHINES

1. industries best pricing
2. high quality products
3. extensive availability
4. 100% money back guarantee



GS[®] is a registered trademark of Brunswick Bowling Products, LLC

Because mechanics would rather have **spare** time than a break






HUNDRED PERCENT MONEY BACK GUARANTEE

IF YOU ARE NOT A 100% SATISFIED, WE ARE NEITHER.

CONTENTS

Section	Category	Page
S 1	Elevator Parts	3
S 2	Transport Band	8
S 3	Ball Cushion & Pit Curtain	12
S 4	Accelerator	17
S 5	Sweep Wagon	22
S 6	Setting Table	24
S 7	Drive Frame Assemblies	35
S 8	Distributor	41
S 9	Power Lift	47
S10	Ball Return & Rack	49
S11	Other Rep. Parts	51
S12	Kegel Rep. Parts 	55

We continue to expand our range replacement parts. Since the 2019 Edition of our Replacement Parts Catalogue we have enlarged our stock with more than 20 high quality replacement parts essential to your GS® pinsetters. We can offer these parts at the industry's best pricing.

With virtually no customer complaints and zero refunds we continue to give a 100% money back guarantee, when a customer for whatever reason is not satisfied with the purchased parts. If the product(s) is returned within 30 days, a full refund will be made.

GS® as used throughout this catalog is a registered trademark of Brunswick Bowling Products, LLC and is in no way associated with Bowltech International. GS-10, GS-92, GS-96, GS-98 and GS -X are protected brands by Brunswick Bowling.



S1

ELEVATOR

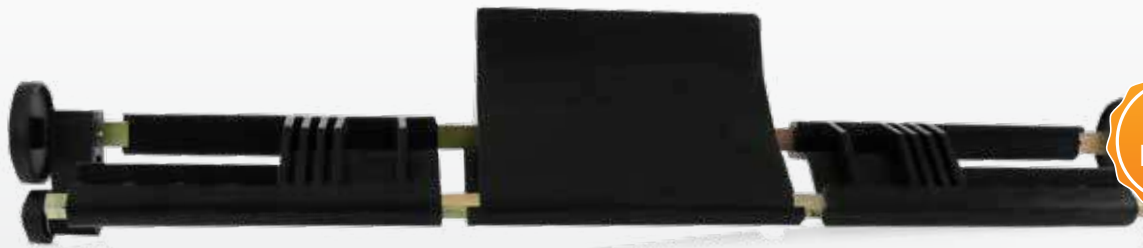
BOWLTECH®

Replacement parts for GS[®] machines



S1 Pin shovel only
(elevator)

GS47011049001



S1 Pin shovel assembly
(complete)

GS47013532009



S1 Spacer

GS47014009004



S1 Chain gear

GS47011053004



S1 Ejector

GS47014060003



S1 Master link w/pin

GS47013871004



S1 Shovel Guide

GS47014017003



S1 Slide band
GS47013912004



S1 R.H. front pin deflector
GS47013991001



S1 Hairpin
(3 mm x 62 mm)
GS11054301001



S1 L.H. front pin deflector
GS47013992001



S1 Bushing
GS47012273004



S1 R.H. rear pin deflector
GS47013993001



S1 Well nut 8 mm
GS11135400000



S1 L.H. rear pin deflector
GS47013994001

Replacement parts for GS® machines



S1 Switch assembly
(silver box)

GS47243027004



S1 Switch (silver box)

GS47243026004



S1 V-Belt 10 x 6 x 1900 mm

GS11053905000



S1 Micro switch only

GS47014918003



S1 V-Belt pulley

GS47013956003



S1 Round belt pulley

GS47022410003



S1 V-Belt pulley adapter

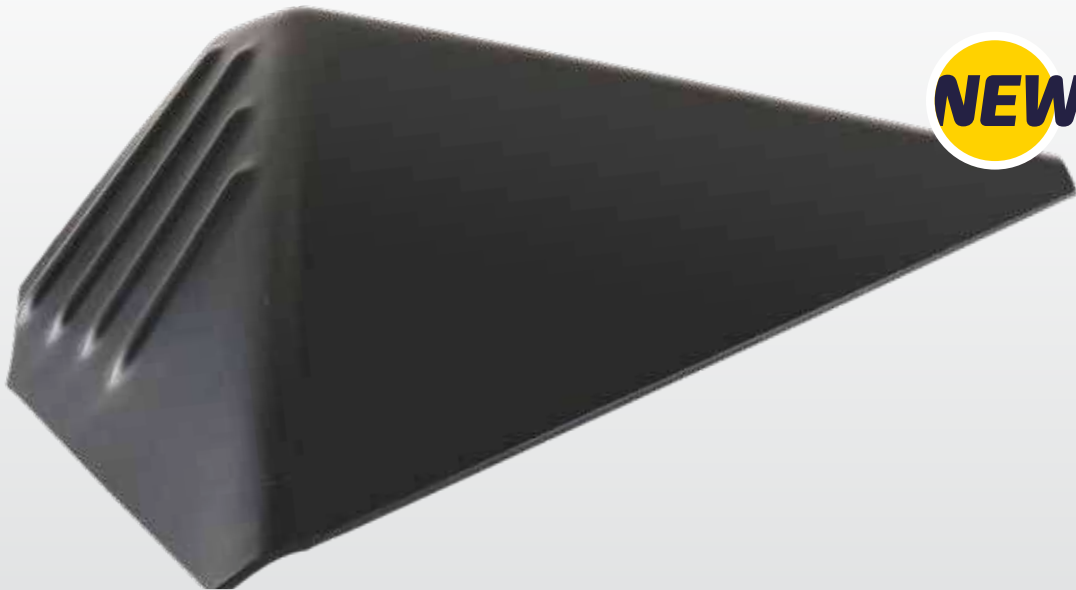
GS47014054003



S1 Rubber Bumper
GS47014800004



S1 Wedge guide
GS47013951003



NEW!

S1 R. H. Pindeflector board
GS47023986001



NEW!

S1 L. H. Pindeflector board
GS47023987001

S2



TRANSPORT BAND



S2 Bearing block repair kit
GS47274332002



S2 Threaded rod
GS47024093004



S2 Bearing
GS47024094003



S2 End cap with bearing
GS47020908003



S2 Compression spring
GS47024309004



S2 LH T-band frame assembly
GS47024736009



S2 RH T-band frame assembly
GS47024735009

Replacement parts for GS[®] machines



NEW!

S2 Roller

GS47020942003



NEW!

S2 Roller Bushing

GS47020943004



S2 Round Belt Pulley

GS47093863003



S2 V-belt pulley

GS47013956003



S2 Drive pulley assembly

GS47092415003



S2 Flange

GS47094326004



S2 V-belt pulley - 110 mm (T-band)

GS47024330004



S2 V-Belt pulley

GS47024004003



BEST BUY

S2 Shaft

GS47023998004



S2 Well nut 8 mm

GS11135400000



TOP DEAL

S2 Poly cord belt 15 mm x 7 mtr

GS47024838005

GS® CARPET SHORT PIT

- Easy installation
- Resistant to cleaners and conditioners
- Form-retaining, does not stretch
- Extremely durable



HIGH QUALITY CARPET BELT

This transport band, also called 'Carpet Belt' is made from high-quality materials which makes it extremely durable. The transport band is composed of 4 layers ensuring absolute durability and is maintenance-free.

[GS11635201100](#)



S2 V-Belt 10 x 6 x 2650 mm
[GS11053910000](#)



S2 V-Belt 10 x 6 x 2560 mm
[GS11053909000](#)



S2 V-Belt 10 x 6 x 925 mm
[GS11053907000](#)

S3



BALL CUSHION & PIT CURTAIN



S3 Pin wipe
GS47092527000



S3 Cap (Ball cushion ass.)
GS47023660004



S3 Rubber Mount
GS11053585000



S3 Overflow chute clamp
GS11603301000



S3 Mount - Motor mount (metric)
GS11053578000



S3 Rubber mount (6 mm thread)
GS11053575000



S3 Black impact strip
GS47021010003



S3 Rubber Mount (8 mm thread)
GS11053582000



S3 Round belt pulley
GS47022410003



S3 Hydraulic ball cushion
GS99026121000



S3 Bearing Block
GS47020947003

Replacement parts for GS® machines



S3 Overflow sock
Classic
GS47022531000

OVERFLOW SOCK WIDE

- Improved design
- Reinforced bottom

The reinforced bottom reduces wear and slows the pin down when falling on the transportband. This design has a mounting ring to secure the overflow sock and prevent it from excessively swinging.

GS47022531000-O



BALL CUSHION FRAME

- Heavy duty Ball Cushion Frame
- Including brackets
- For use on all GS[®] machines

This Ball Cushion Frame is made from High Quality first class steel. The construction is reinforced on parts where necessary.

[GS47025639009](#)



S3 Pit Curtain GS
[GS47021084004](#)

Replacement parts for GS® machines



NEW!

S3 Top Ball Cushion Board
GS47021872003



NEW!



REAR



SIDE

S3 L.H. Ball Cushion Board
GS47025044009



NEW!



REAR



SIDE

S3 R.H. Ball Cushion Board
GS47025045009



S4

ACCELERATOR

Replacement parts for GS® machines



S4 Protector wedge
righthand
GS47021619002



S4 Lower protector wedge
GS47021618002



S4 Protector wedge
lefthand
GS47021620002



S4 Solenoid black
14/47 Molex
GS99070356004



S4 Pivoting lever
GS47031454002



S4 Accelerator motor
GS99030363004



S4 V-Belt
10 x 6 x 950 mm Z38
GS11053904000



S4 R.H Button
GS47031055003



S4 L.H. Button
GS47031056003



S4 Locking bolt
GS47031797002



S4 Motor mounting bracket
GS47031603003



S4 Lever -Ball door stop
GS47031822004



S4 Solenoid assembly
(red box machines only)
GS99060219004



S4 Accelerator/distribution motor 1/2 H.P 230V
GS99040113002

Replacement parts for GS[®] machines



S4 L.H. locking mechanism
GS47033557009

S4 R.H. locking mechanism
(not shown)
47033558009



S4 Terminal .62
Male
GS11680302000



S4 Terminal .62
Female
GS11680301000



S4 Tension spring ball door
GS47030091004



S4 Tension spring (ball door)
GS47034767004



S4 Tension spring
GS47030276004



S4 Driving drum
complete rear
GS47035064099



S4 Front driving drum
assembly
GS47035232002



S4 Spacer
GS47035234004

NEW!



S4 Hydraulic Sweep
GS99046122000



S4 Ball door ring
GS47021057003



S4 Shaft (ball door)
GS47031091004

MECHANIC'S CHOICE



S4 Solenoid only Black
GS99070356004-0



S4 Hairpin (3 mm x 62 mm)
GS11054301001

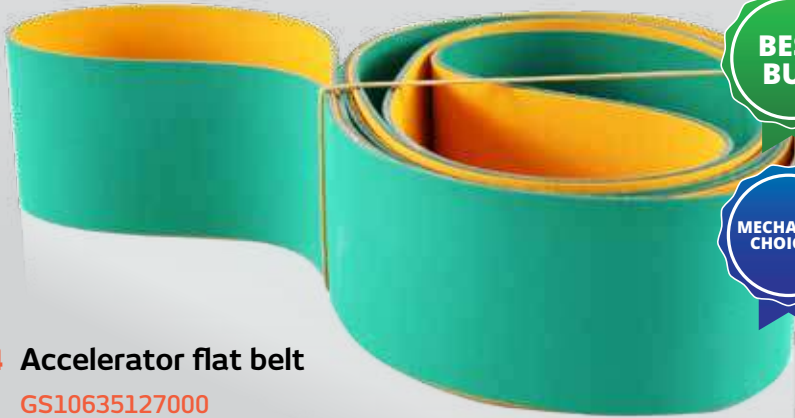


S4 Ejot-plastic nuts 3.5
GS11055800000

TOP DEAL



S4 Ball door
GS47031054002



S4 Accelerator flat belt
GS10635127000

BEST BUY

MECHANIC'S CHOICE

S5



**SWEEP
WAGON**



S5 Connector joint
GS99040151004



S5 Switch assembly
(silver box)
GS47243027004



S5 Solenoid black
14/47 Molex
GS99070356004



S5 Hydraulic Sweep
GS99046122000



S5 Tipper
GS47041783003



S5 Gutter Adapter
GS47041721002



S5 Rubber bumper
GS47044979004



S5 Wagon Wheel
GS99040249004



S5 Solenoid assembly
(red box machines only)
GS99060219004

S6



SETTING TABLE

BOWLTECH®

PIN HOLDER ASSEMBLY COMPLETE

The pinholder is available in several versions; the 'Pin Holder Assembly Complete' is already fully assembled which makes it very easy to replace.

GS47055314009



S6 GSX Solenoid plunger
GS47055004004



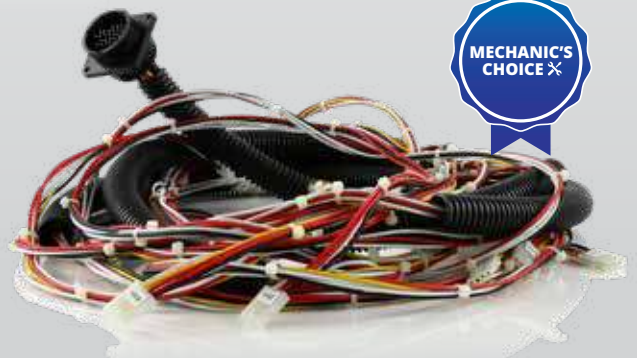
S6 Square shaft gear
GS47071615004



S6 Latch
GS47051674004

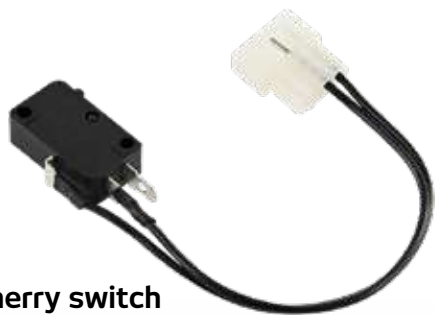


S6 Setting table harness (GS10-GS98)
GS47243025003



S6 Setting table harness
GS47245164001

Replacement parts for GS® machines



S6 Cherry switch
Silver box
GS47053635004



S6 Spotting tong assembly
(2,3,7,8,9,10)
GS47055118009



S6 Microswitch
double
GS47054700004



S6 Spotting tong assembly
(1,4,5,6)
GS47055117009



S6 Tong left hand
GS47055148002



S6 Tong right hand
GS47054896002



S6 Pin
GS47054997003



S6 Pin detector plate
GS47054298001



S6 Pivot pin (each)
GS47860005000



S6 Connecting link
(SP TNG assembly)
GS47051762004



S6 Toothed rack
(6 mmx 25 mm)
GS47050365003



S6 Switch spring
GS47050639004



S6 T - Stop
GS47071871003



S6 Torsion spring
GS47050640004



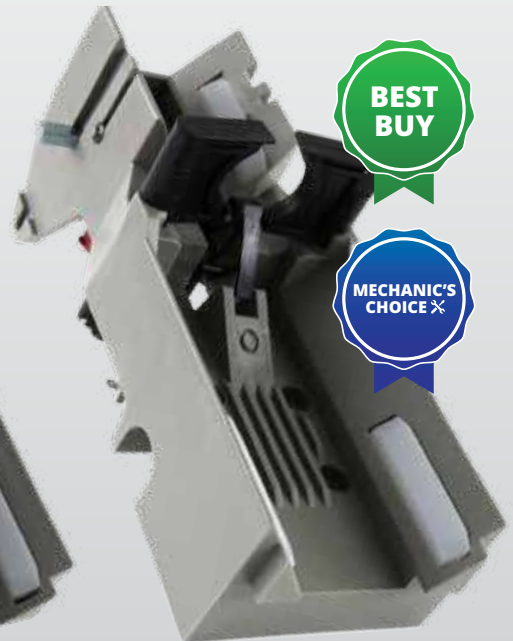
S6 Microswitch only
GS47054700004-A



S6 PKG urethane damper
(10/PKG)
GS47051758600



S6 Pin holder with dampers
GS47054689009



S6 Pin holder
Double switch
GS47054699009

Replacement parts for GS® machines



S6 Terminal .62 Female
GS11680301000



S6 Gear
GS47054984004



S6 Threaded cap
GS47070401004



S6 Terminal .62 Male
GS11680302000



S6 Chain gear
GS47011053004



S6 Lower chain gear w/bearing block
GS47075553003



S6 Pin holder assembly complete
GS47055314009



S6 GSX Pin holder with dampers
GS47054980201



S6 GSX Solenoid complete
GS99060351004



S6 Deck plate (spot tong assembly)
GS47051756004



S6 Deck plate for GSX tong
GS47054902002



S6 GSX Grip ring
GS47054986004



S6 Wedge (large)
GS47055320003



S6 Wedge (small)
GS47055319003



S6 GSX Switch button
GS47054988003



S6 Solenoid silver box only
GS99060242004-O



S6 Motor - Table
230/380V grey 0.37KW
GS99040116002

Replacement parts for GS[®] machines



S6 'A' Position spotting tong
GS47051757003



S6 O-Ring for plunger
GS99090349004



S6 Spotting tong
GS47053782003



S6 GSX Drive
GS47054983002



S6 Connecting Link
GS47050266004



S6 Link assembly Setting Table (GSX)
GS47055002002



S6 GSX Solenoid only
GS99060351004-O



S6 GSX Clip
GS47055001004



S6 GSX Switch part
GS47054985001



S6 Tension spring
(pin holder assembly)
GS46050302004



S6 Tension spring (table)
GS47052240004



S6 Dampers only (Pin holder)
GS47050308004



S6 Pin Gripper GSX pin holder
GS47054981002



S6 Pin Gripper LH
GS47052439004



S6 Pin Gripper RH
GS47052440004



S6 Holder
GS47051634004



S6 GSX pin holder
w/damper
GS47054980201



S6 Cherry switch
only
GS47053635004-A



S6 Cherry switch
(Red box machines only)
GS47052418004

Replacement parts for GS® machines



S6 V-Belt 10 x 6 x 2500 mm
GS11053906000



S6 Pin detector spring
GS47054708004

NEW!



S6 Solenoid spring
(GSX pin holder)
GS47054987004



S6 GSX Switch finger
GS47054982002



S6 GSX Tension Spring
GS47055008004



S6 Chain gear
GS47075474004



S6 Tube guide
GS47085349003



S6 Gear
GS47051616004



S6 Spotting Tong Pivot LH
GS47054897003



S6 Spotting Tong Pivot RH
GS47054898003



S6 Tension spring
GSX Pin holder
GS47055005004



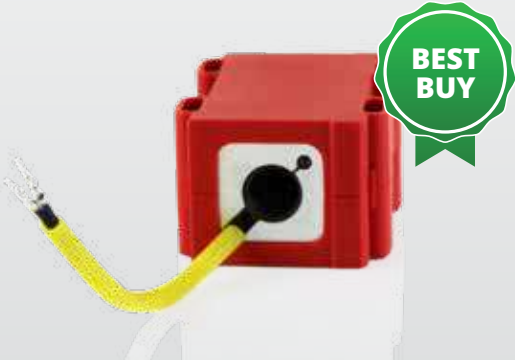
S6 GSX Torsion Spring
GS47055006004



S6 Lever
GS47054992002



S6 Lever
GS47054990001



S6 Solenoid silver box assembly
GS99060242004



S6 GSX micro switch
GS47055323004



S6 Lever
GS47054993001



S6 Lever
GS47054992001



S6 Lever
GS47054991001

Replacement parts for GS® machines



S6 Toothed rack complete
GS47053513009



S6 Connecting link
GS47050266004



S6 GSX micro switch only
GS47055323000



S6 Large roller support
GS47071171003



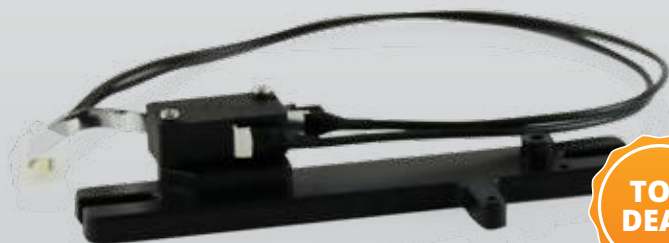
S6 Bearing Tabel
GS99010124004



S6 Geared rack setting table
GS47051635001



S6 Small roller support
GS47071170003



S6 Switch assembly (silver box)
GS47243027004



S6 Lever
GS47054989001



S7

DRIVE FRAME ASSEMBLIES

Replacement parts for GS® machines

MOTOR - TABLE 230 /380 V GREY 0.37 KW

- Extremely durable
- Value for money
- Low Maintenance



MOTOR - TABLE

This high quality, heavy duty table motor has a very high brake torque and is low on maintenance. A real 'value for money'-table motor.

[GS99040116002](#)





S7 Hairpin (3 mm X 62 mm)
GS11054301001



S7 Tension spring
GS47052120004



S7 Pinion shaft
GS47071705004



**S7 Motor drive pulley
Dual sheave**
GS47073866004



S7 Double pulley
GS47070990003



S7 Rubber bumper
GS99070398004



S7 Gear assembly w/hub
GS47071702003



S7 Gear only
GS47075072002



**S7 Switch assembly
(silver box)**
GS47243028004



**S7 Solenoid black
14/47 molex**
GS99070356004



Replacement parts for GS[®] machines



S7 Sweep stop motor
(0.18 KW)
GS99040241004



S7 V-Belt
10 x 6 x 875 mm Z35
GS11053901000



S7 Metal pinion gear
GS47071449609

**IMPROVED
ABSORBER**



S7 Hydraulic shock absorber
setting table
GS99076120000

S7 Hydraulic shock absorber
GS99076123000



S7 Solenoid only
GS99060387004-0



S7 Solenoid assembly
(red box machines only)
GS99060219004



S7 V-Belt
13 x 8 x 1375 mm
GS11053903000



S7 V-Belt
10 x 6 x 1160 mm Z46
GS11053902000



S7 Sprocket shaft
GS47071823004



S7 Square shaft drive gear
GS47071881004



S7 Connecting link
5/8 x 3/8
GS11600501000



S7 Switch assembly
(silver box)
GS47243027004



S7 Spindle gear
GS47071880003



S6 Chain gear
GS47075474004



S7 Reed switch
GS47072307004



S7 Square shaft gear
GS47071615004



S6 Tube guide
GS47085349003



S7 Bearing block
GS47071578004

Replacement parts for GS® machines



S7 Cam
GS47071879003



S7 Bushing
GS47012273004



S7 Clevice
GS47071343004



S7 Switch (silver box)
GS47243026004



S7 Crank
GS47075356003



S7 Chain gear
GS47011053004



S7 Crank arm
GS47075357003



S7 5/8" Chain - 51 links and 2 connection links
GS47075488004



S7 Reed switch assembly silver box
GS47243029004



S7 Latch
GS47051674004



S8

DISTRIBUTOR

BOWLTECH®

Replacement parts for GS[®] machines



S8 V-Belt
13 x 8 x 1375 mm
GS11053903000



S8 Rubber mount
GS11053579000



S8 Fin Switch Complete
GS47094095002



S8 Solenoid silver box only
GS99060242004-0



S8 Spur gear position 1 & 2
GS47090555003



S8 Spur gear position 3
GS47093629003



S8 Solenoid silver box assembly
GS99060242004



S8 L.H. Pin guide wedge
GS47093929001



S8 R.H. Pin guide wedge
GS47093906001



S8 Two piece spur gear
GS47274669004



S8 Flange
GS47094326004



NEW!

S8 7 Pin Shield

GS47093760002



NEW!

S8 Pin shield (2,3,8,9)

GS47091890002



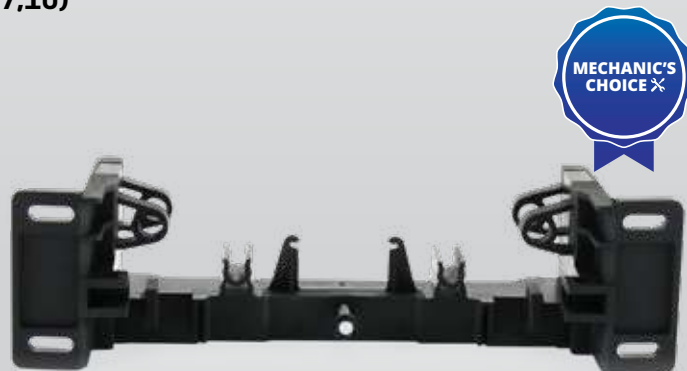
Universal pin station
(1,5,6)



Universal pin station
(2,3,4,8,9)



Universal pin station
(7,10)



Housing



UNIVERSAL PIN STATION

- Extremely durable
- High-quality material
- Easy to replace

Universal pin station (1,5,6)

GS47094793009

Universal pin station (2,3,4,8,9)

GS47094792009

Universal pin station (7,10)

GS47094794009

Housing

GS47094778001

Replacement parts for GS[®] machines



S8 O-Ring for plunger
GS99090349004



S8 Ejector tension spring
GS47094791004



S8 Dowel pin (3 x 15mm)
GS47093587004



S8 Drive pulley assembly
GS47092415003



S8 Bearing shell
GS47094347003



S8 Spur gear w/bearing
GS47093547004



S8 Retaining pin
GS47094789003



S8 Torsion spring
(right hand)
GS47090577004



S8 Torsion spring
(left hand)
GS47090578004



S8 Front dist.
spur shaft gear 2-P
GS47275746009



S8 Release button
GS47094782003



S8 Polycord
13 mm (20 mtr)
GS47092300005



S8 Pin stop
GS47090969003



S8 Slider only (distributor)
GS47094224002



S8 Ejector flap
GS47094784002



S8 Ejector flap (left hand)
GS47094783002



S8 Spindle gear
GS47071880004



S8 Solenoid Complete
GS99060387004



S8 Slider assembly Complete
GS47091284002



S8 Bearing shell w/shoulder
GS47094346003



S8 Distributor pulley Repair kit
GS47275748009



S8 Slide (smart shark)
GS47095105003



S8 PKG-Extender sleeve retaining BOW(6)
GS47862931000

Replacement parts for GS® machines



S8 Square Shaft
GS47094790003



S8 Ball bearing (6003ZZ)
GS11430053000

S8 Bushing Square spindle
GS47095742004



S8 Release lever Universal
GS47095154009



S8 Spring GSX smart shark
GS99090348004



S8 Fin switch
GS47095106001



S8 Retaining BOW w/flap
GS47094779001



S8 Spur gear
GS47093900003



S8 Spur gear W/25 mm collar
GS47090547004



S8 Retaining BOW w/o flap
GS47094780001



S8 Round belt pulley
GS47093863003



S8 Rear distr. shaft drive pulley
GS47024839002



S9

**POWER
LIFT**

BOWLTECH®

Replacement parts for GS® machines



S9 Rubber track
BR53520686000



S9 Poly-V belt ball lift
BR53520235000



S9 Ball lift track
GS90520171000



NEW!

S9 Standard duty clutch
BR53860555000



S9 Pulley upper (ball lift)
GS53520658000



S9 Inner ring
BR53520421000



S9 Power lift drive shaft
GS53520066000



S9 Poly-V Idler assembly
BR53520244000



S9 Hub & tire power lift wheel
BR53520060000



S9 Lower pulley assembly
BR53520663001



S9 Power lift wheel urethane
GS90520060000



S10

BALL RETURN & RACK

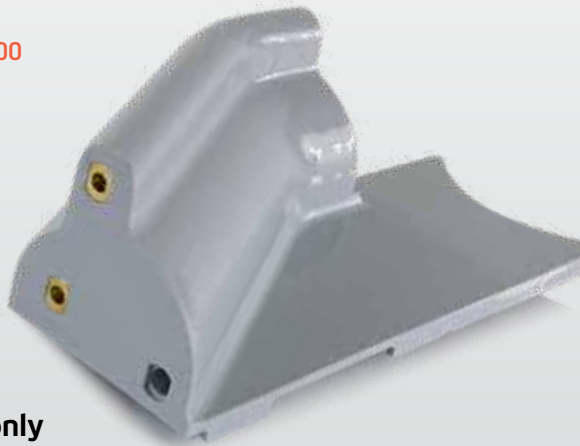
Replacement parts for GS® machines



S10 Ball return end cap - top
GS53400270000



S10 Ball return end cap - low
GS53400271000



S10 Exit Track only
RH LT gray
GS53400099000



S10 Exit Track LH LT gray
GS53400097000



S10 Reset switch LT grey
GS53861057000



S11

OTHER
PARTS

Replacement parts for GS® machines



S11 Setting table cable
Nexgen
GS47245420004



S11 Consolidated cable 36 pin
molex -37 pin main
GS47244922004



S11 Ball detector
assembly
GS57214921000



S11 Ball detector assembly
(set of 2)
GS57214921000-SET



S11 Reversing contactor
GS11671011000



S11 Non-reversing contactor
DC 24V
GS11671513000



S11 Non-reversing contactor
DC 12V
GS11671514000



S11 Key switch assembly
GS47862503000



S11 PBW R.H. Vertical Support
BR84200454001



S11 PBW L.H. Vertical Support
BR84200454002



- S11** External ret ring
8 mm
GS11051854001
- 10 mm
GS11051855001
- 12 mm
GS11051851001
- 15 mm
GS11051858001
- 17 mm
GS11051852001
- 20 mm
GS11051853001
- 25 mm
GS11051856001



- S11** Retaining ring
12 x 1 mm
GS11053451000
- 15 x 1 mm
GS11053452001
- 16 x 1 mm
GS11053453001
- 17 x 1 mm
GS11053454001
- 20 x 1,2 mm
GS11053455001
- 25 x 1,2 mm
GS11053456001



- S11** PNHD mach screw
8 mm x 60 mm
GS11052402001



- S11** Key
(4 mm x 4 mm x 18 mm)
GS11053499000
- (4 mm x 4 mm x 20 mm)
GS11053500000
- (5 mm x 5 mm x 20 mm)
GS11053491000
- (5 mm x 5 mm x 25 mm)
GS11053501000
- (5 mm x 5 mm x 32 mm)
GS11053494000
- (8 mm x 7 mm x 32 mm)
GS11053497000
- (8 mm x 7 mm x 40 mm)
GS11053495000
- (8 mm x 7 mm x 45 mm)
GS11053493000
- (8 mm x 7 mm x 50 mm)
GS11053502000



- S11** Flat Washer 8.4 mm
GS11052003001



- S11** Speed nut
3 mm
GS11053475001
- 4 mm
GS11053476001
- 5 mm
GS11053481001
- 6 mm
GS11053482001
- 7 mm
GS11053477001
- 8 mm
GS11053478001
- 9 mm
GS11053479001
- 10 mm
GS11053480001



- S11** Metric key M10 x 32 mm
GS11053511000

Replacement parts for GS® machines

S11 Belt cutter
GS47093876004



S11 Belt welding iron 220V
GS47094208004



S11 Belt welding clamp Pro
GS47862770001





S12

KEGEL PARTS



KEGEL

BOWLTECH®

Replacement parts for GS[®] machines



S12 Pin wipe
163-6022



S12 Crossover wedge
163-8011



S12 Shark transition cam
163-6008



S12 Underground-, trap door-, Accelerator ball wipe
163-6023 /-6024 /-6025



S12 Square spindle with bushing
163-6003



S12 Sweep wagon wheel
162-6099



S12 Red belt 12.5 mm x 20 mtr
163-9020R



S12 Orange belt 12.7 mm x 20 mtr
163-9004



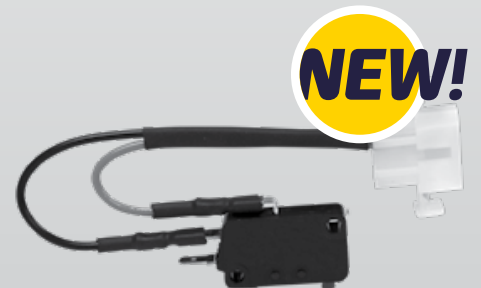
S12 Red belt 15 mm x 7 mtr
163-9007R



S12 Setting table harness (GSX only)
163-8000



S12 Retaining pin
163-6002



S12 Single cherry
163-8001



S12 Pin detector plate (GSX only)
163-6001



S12 Impact strip
162-6125



S12 Pivot Bearing
162-6126



S12 Pivot pin
163-6004



S12 Power Lift Wheel
162-7001

**DEEP
PURPLE
URETHANE**



S12 Power Lift Track
162-6305



S12 Heavy duty overflow sock
163-6006

NEW!



S12 Double cherry
163-8002



S12 Micro switch (replaces single GSX)
163-8003



S12 Gutter Adapter
162-6124

Replacement parts for GS[®] machines

INDEX

With our large stock of replacement parts for GS[®] machines in the Bowltech Warehouse in Made, we can assure competitive pricing and fast delivery to all of our customers!



7000 m² Bowltech central warehouse
Made, Netherlands

Partnumber	Page	Partnumber	Page	Partnumber	Page	Partnumber	Page
162-6099.....	56	BR84200454002.....	52	GS11053501000.....	53	GS47012273004.....	5, 40
162-6124.....	57	GS10635127000.....	21	GS11053502000.....	53	GS47013532009.....	4
162-6125.....	57	GS11051851001.....	53	GS11053511000.....	53	GS47013871004.....	4
162-6126.....	57	GS11051852001.....	53	GS11053575000.....	13	GS47013912004.....	5
162-6305.....	57	GS11051853001.....	53	GS11053578000.....	13	GS47013951003.....	7
162-7001.....	57	GS11051854001.....	53	GS11053579000.....	42	GS47013956003.....	6, 10
163-6001.....	57	GS11051855001.....	53	GS11053582000.....	13	GS47013991001.....	5
163-6002.....	56	GS11051858001.....	53	GS11053585000.....	13	GS47013992001.....	5
163-6003.....	56	GS11051862001.....	53	GS11053901000.....	38	GS47013993001.....	5
163-6004.....	57	GS11052003001.....	53	GS11053902000.....	39	GS47013994001.....	5
163-6006.....	57	GS11052402001.....	53	GS11053903000.....	39, 42	GS47014009004.....	4
163-6008.....	56	GS11053451000.....	53	GS11053904000.....	19	GS47014017003.....	4
163-6022.....	56	GS11053452001.....	53	GS11053905000.....	6	GS47014054003.....	6
163-6023.....	56	GS11053453001.....	53	GS11053906000.....	32	GS47014060003.....	4
163-6024.....	56	GS11053454001.....	53	GS11053907000.....	11	GS47014800004.....	7
163-6025.....	56	GS11053455001.....	53	GS11053909000.....	11	GS47014918003.....	6
163-8000.....	56	GS11053456001.....	53	GS11053910000.....	11	GS47020908003.....	9
163-8001.....	56	GS11053475001.....	53	GS11054301001.....	5, 21, 37	GS47020942003.....	10
163-8002.....	57	GS11053476001.....	53	GS11055800000.....	21	GS47020943004.....	10
163-8003.....	57	GS11053477001.....	53	GS11135400000.....	5, 10	GS47020947003.....	13
163-8011.....	56	GS11053478001.....	53	GS11430053000.....	46	GS47021010003.....	13
163-9004.....	56	GS11053479001.....	53	GS11600501000.....	39	GS47021057003.....	21
163-9007R.....	56	GS11053480001.....	53	GS11603301000.....	13	GS47021084004.....	15
163-9020R.....	56	GS11053481001.....	53	GS11635201100.....	11	GS47021618002.....	18
BR53520060000.....	48	GS11053482001.....	53	GS11671011000.....	52	GS47021619002.....	18
BR53520235000.....	48	GS11053491000.....	53	GS11671513000.....	52	GS47021620002.....	18
BR53520244000.....	48	GS11053493000.....	53	GS11671514000.....	52	GS47021872003.....	16
BR53520421000.....	48	GS11053494000.....	53	GS11680301000.....	20, 28	GS47022410003.....	6, 13
BR53520663001.....	48	GS11053495000.....	53	GS11680302000.....	20, 28	GS47022531000.....	14
BR53520686000.....	48	GS11053497000.....	53	GS46050302004.....	31	GS47022531000-O.....	14
BR53860555000.....	48	GS11053499000.....	53	GS47011049001.....	4	GS47023660004.....	13
BR84200454001.....	52	GS11053500000.....	53	GS47011053004.....	4, 28, 40	GS47023986001.....	7

Partnumber	Page	Partnumber	Page	Partnumber	Page	Partnumber	Page
GS47023987001.....	7	GS47053635004-A.....	31	GS47071871003.....	27	GS47095154009.....	46
GS47023998004.....	10	GS47053782003.....	30	GS47071879003.....	40	GS47095742004.....	46
GS47024004003.....	10	GS47054298001.....	26	GS47071880003.....	39	GS47243025003.....	25
GS47024093004.....	9	GS47054689009.....	27	GS47071880004.....	45	GS47243026004.....	6, 40
GS47024094003.....	9	GS47054699009.....	27	GS47071881004.....	39	GS47243027004.....	6, 23, 34, 39
GS47024309004.....	9	GS47054700004.....	26	GS47072307004.....	39	GS47243028004.....	37
GS47024330004.....	10	GS47054700004-A.....	27	GS47073866004.....	37	GS47243029004.....	40
GS47024735009.....	9	GS47054708004.....	32	GS47075072002.....	37	GS47244922004.....	52
GS47024736009.....	9	GS47054896002.....	26	GS47075356003.....	40	GS47245164001.....	25
GS47024838005.....	10	GS47054897003.....	32	GS47075357003.....	40	GS47245420004.....	52
GS47024839002.....	46	GS47054898003.....	32	GS47075474004.....	32, 39	GS47274332002.....	9
GS47025044009.....	16	GS47054902002.....	29	GS47075488004.....	40	GS47274669004.....	42
GS47025045009.....	16	GS47054980201.....	28, 31	GS47075553003.....	28	GS47275746009.....	44
GS47025639009.....	14	GS47054981002.....	31	GS47085349003.....	32, 39	GS47275748009.....	45
GS47030091004.....	20	GS47054982002.....	32	GS47090547004.....	46	GS47860005000.....	26
GS47030276004.....	20	GS47054983002.....	30	GS47090555003.....	42	GS47862503000.....	52
GS47031054002.....	21	GS47054984004.....	28	GS47090577004.....	44	GS47862770001.....	54
GS47031055003.....	19	GS47054985001.....	30	GS47090578004.....	44	GS47862931000.....	45
GS47031056003.....	19	GS47054986004.....	29	GS47090969003.....	45	GS53400270000.....	50
GS47031091004.....	21	GS47054987004.....	32	GS47091284002.....	45	GS53400097000.....	50
GS47031454002.....	18	GS47054988003.....	29	GS47091890002.....	43	GS53400099000.....	50
GS47031603003.....	19	GS47054989001.....	34	GS47092300005.....	45	GS53400271000.....	50
GS47031797002.....	19	GS47054990001.....	33	GS47092415003.....	10, 44	GS53520066000.....	48
GS47031822004.....	19	GS47054991001.....	33	GS47092527000.....	13	GS53520658000.....	48
GS47033557009.....	20	GS47054992001.....	33	GS47093547004.....	44	GS53861057000.....	50
GS47033558009.....	20	GS47054992002.....	33	GS47093587004.....	44	GS57214921000.....	52
GS47034767004.....	20	GS47054993001.....	33	GS47093629003.....	42	GS57214921000-SET.....	52
GS47035064099.....	20	GS47054997003.....	26	GS47093760002.....	43	GS90520060000.....	48
GS47035232002.....	20	GS47055001004.....	30	GS47093863003.....	10, 46	GS90520171000.....	48
GS47035234004.....	20	GS47055002002.....	30	GS47093876004.....	54	GS99010124004.....	34
GS47041721002.....	23	GS47055004004.....	25	GS47093900003.....	46	GS99026121000.....	13
GS47041783003.....	23	GS47055005004.....	33	GS47093906001.....	42	GS99030363004.....	18
GS47044979004.....	23	GS47055006004.....	33	GS47093929001.....	42	GS99040113002.....	19
GS47050266004.....	30, 34	GS47055008004.....	32	GS47094095002.....	42	GS99040116002.....	29, 36
GS47050308004.....	31	GS47055117009.....	26	GS47094208004.....	54	GS99040151004.....	23
GS47050365003.....	27	GS47055118009.....	26	GS47094224002.....	45	GS99040241004.....	38
GS47050639004.....	27	GS47055148002.....	26	GS47094326004.....	10, 42	GS99040249004.....	23
GS47050640004.....	27	GS47055314009.....	25, 28	GS47094346003.....	45	GS99046122000.....	21, 23
GS47051616004.....	32	GS47055319003.....	29	GS47094347003.....	44	GS99060219004.....	19, 23, 38
GS47051634004.....	31	GS47055320003.....	29	GS47094778001.....	43	GS99060242004.....	33, 42
GS47051635001.....	34	GS47055323000.....	34	GS47094779001.....	46	GS99060242004-O.....	29, 42
GS47051674004.....	25, 40	GS47055323004.....	33	GS47094780001.....	46	GS99060351004.....	28
GS47051756004.....	28	GS47070401004.....	28	GS47094782003.....	44	GS99060351004-O.....	30
GS47051757003.....	30	GS47070990003.....	37	GS47094783002.....	45	GS99060387004.....	45
GS47051758600.....	27	GS47071170003.....	34	GS47094784002.....	45	GS99060387004-O.....	38
GS47051762004.....	27	GS47071171003.....	34	GS47094789003.....	44	GS99070356004.....	18, 23, 37
GS47052120004.....	37	GS47071343004.....	40	GS47094790003.....	46	GS99070356004-O.....	21
GS47052240004.....	31	GS47071449609.....	38	GS47094791004.....	44	GS99070398004.....	37
GS47052418004.....	31	GS47071578004.....	39	GS47094792009.....	43	GS99076120000.....	38
GS47052439004.....	31	GS47071615004.....	25, 39	GS47094793009.....	43	GS99076123000.....	38
GS47052440004.....	31	GS47071702003.....	37	GS47094794009.....	43	GS99090348004.....	46
GS47053513009.....	34	GS47071705004.....	37	GS47095105003.....	45	GS99090349004.....	30, 44
GS47053635004.....	26	GS47071823004.....	39	GS47095106001.....	46		



BOWLTECH NETHERLANDS (HQ)

Brieltjenspolder 42
4921 PJ Made
Netherlands
Tel. +31 (0) 162-682000
info@bowltech.nl

BOWLTECH BELGIUM

Kruisboommolenstraat 7A/11
8800 Roeselare
België
Tel. +32 (0) 51-490590
info@bowltech.be

BOWLTECH DEUTSCHLAND GMBH

Wilhelm-Röntgen-Str. 27
52499 Baesweiler
Germany
Tel.: +49 (0)2401 91 94 - 0
info@bowltech.de

BOWLTECH UK LTD

5 Spectrum Estate, Bircholt Rd
Parkwood Maidstone, Kent
United Kingdom
Tel: 01622 683628
info@bowltech.co.uk

BOWLTECH FRANCE SARL

36, Avenue Hoche
F-75008 Paris
France
Tel. +33 (0) 182 88 90 32
sales@bowltech.fr

BOWLTECH SWEDEN AB

Viaaredsvägen 4B
SE-504 64 Borås
Sweden
Tel.: +46 (0)33-24 19 10
info@bowltech.se

BOWLTECH DANMARK A/S

Vissingsgade 13A, 1
7100 Vejle
Danmark
Tel. +45 76 30 11 99
info@bowltech.dk

BOWLTECH NORWAY AS

Bregneveien 4
2007 Keller
Norway
Tel.: +47 6380 1910
info@bowltech.no

GS® as used throughout this catalog is a registered trademark of Brunswick Bowling Products, LLC and is in no way associated with Bowltech International. GS-10, GS-92, GS-96, GS-98 and GS -X are protected brands by Brunswick Bowling.



With our extensive Bowltech webshop in five different countries, ordering your replacement parts is just one click away. With considerable availability we guarantee your order will be ready for shipment within no time.

All your parts one click away...

